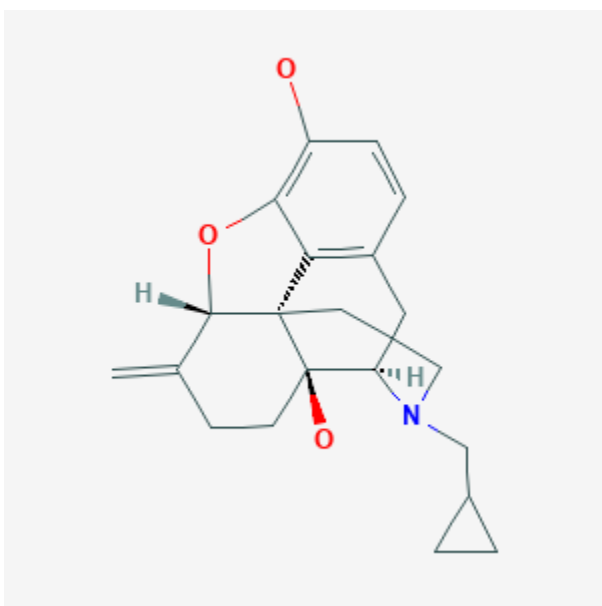




## Nalmefene

Revised: August 15, 2023.

CASRN: 55096-26-9



## Drug Levels and Effects

### Summary of Use during Lactation

No information is available on the use of nalmefene in nursing mothers. If nalmefene is required by the mother for an opiate overdose, she should withhold nursing until the opiate is out of her system. Because nalmefene has some oral bioavailability, use in a nursing mother might cause abstinence symptoms in a breastfed infant who is opioid tolerant.

### Drug Levels

*Maternal Levels.* Relevant published information was not found as of the revision date.

*Infant Levels.* Relevant published information was not found as of the revision date.

**Disclaimer:** Information presented in this database is not meant as a substitute for professional judgment. You should consult your healthcare provider for breastfeeding advice related to your particular situation. The U.S. government does not warrant or assume any liability or responsibility for the accuracy or completeness of the information on this Site.

**Attribution Statement:** LactMed is a registered trademark of the U.S. Department of Health and Human Services.

## Effects in Breastfed Infants

Relevant published information was not found as of the revision date.

## Effects on Lactation and Breastmilk

Nalmefene increases serum prolactin in nonpregnant and nonlactating individuals.[1,2] The prolactin level in a mother with established lactation may not affect her ability to breastfeed.

## Alternate Drugs to Consider

Naloxone

## References

1. Kreek MJ, Schluger J, Borg L, et al. Dynorphin A1-13 causes elevation of serum levels of prolactin through an opioid receptor mechanism in humans: Gender differences and implications for modulation of dopaminergic tone in the treatment of addictions. *J Pharmacol Exp Ther* 1999;288:260-9. PubMed PMID: 9862779.
2. Bart G, Schluger JH, Borg L, et al. Nalmefene induced elevation in serum prolactin in normal human volunteers: Partial kappa opioid agonist activity? *Neuropsychopharmacology* 2005;30:2254-62. PubMed PMID: 15988468.

## Substance Identification

### Substance Name

Nalmefene

### CAS Registry Number

55096-26-9

### Drug Class

Breast Feeding

Lactation

Milk, Human

Narcotic Antagonists