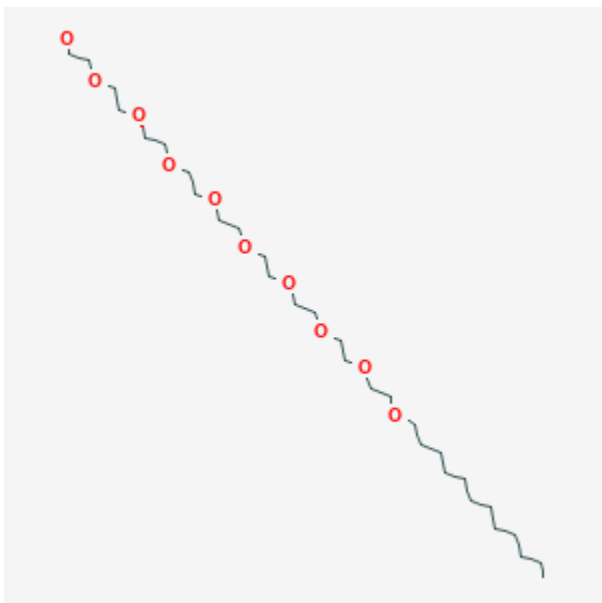




Polidocanol

Revised: May 15, 2023.

CASRN: 3055-99-0



Drug Levels and Effects

Summary of Use during Lactation

No information is available on the clinical use of polidocanol during breastfeeding. Although polidocanol is unlikely to adversely affect the breastfed infant, international guidelines recommend that breastfeeding be withheld for 2 days after sclerotherapy.[1]

Drug Levels

Maternal Levels. Relevant published information was not found as of the revision date.

Infant Levels. Relevant published information was not found as of the revision date.

Disclaimer: Information presented in this database is not meant as a substitute for professional judgment. You should consult your healthcare provider for breastfeeding advice related to your particular situation. The U.S. government does not warrant or assume any liability or responsibility for the accuracy or completeness of the information on this Site.

Attribution Statement: LactMed is a registered trademark of the U.S. Department of Health and Human Services.

Effects in Breastfed Infants

Relevant published information was not found as of the revision date.

Effects on Lactation and Breastmilk

Relevant published information was not found as of the revision date.

References

1. Wong M, Parsi K, Myers K, et al. Sclerotherapy of lower limb veins: Indications, contraindications and treatment strategies to prevent complications - A consensus document of the International Union of Phlebology-2023. *Phlebology*. 2023;38:205–58. PubMed PMID: 36916540.

Substance Identification

Substance Name

CAS Registry Number

3055-99-0

Drug Class

Breast Feeding

Lactation

Milk, Human

Detergents

Sclerosing Solutions

Sclerotherapies

Surface-Active Agents