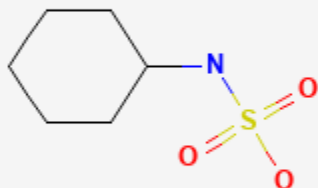




Cyclamate

Revised: July 18, 2022.

CASRN: 100-88-9



Drug Levels and Effects

Summary of Use during Lactation

Very little cyclamate enters breastmilk after maternal ingestion. However, some authors suggest that women may wish to limit the consumption of nonnutritive sweeteners while breastfeeding because their effect on the nursing infants are unknown.[1,2]

Drug Levels

Maternal Levels. Forty-nine women consumed a beverage containing 60 mg of cyclamate. Normal and overweight women were about equally represented in the sample. Breastmilk samples were collected before the

Disclaimer: Information presented in this database is not meant as a substitute for professional judgment. You should consult your healthcare provider for breastfeeding advice related to your particular situation. The U.S. government does not warrant or assume any liability or responsibility for the accuracy or completeness of the information on this Site.

Attribution Statement: LactMed is a registered trademark of the U.S. Department of Health and Human Services.

beverage and at 30, 60, 120, 180, 240, 300, and 360 minutes after the beverage. The average peak milk concentration was 2.56 mcg/L and occurred at 5 hours after the beverage.[3]

Infant Levels. Relevant published information was not found as of the revision date.

Effects in Breastfed Infants

Relevant published information was not found as of the revision date.

Effects on Lactation and Breastmilk

Relevant published information was not found as of the revision date.

Alternate Drugs to Consider

Aspartame

References

1. Sylvetsky AC, Gardner AL, Bauman V, et al. Nonnutritive sweeteners in breast milk. *J Toxicol Environ Health A*. 2015;78:1029–32. PubMed PMID: 26267522.
2. Rother KI, Sylvetsky AC, Schiffman SS. Non-nutritive sweeteners in breast milk: Perspective on potential implications of recent findings. *Arch Toxicol*. 2015;89:2169–71. PubMed PMID: 26462668.
3. Stampe S, Leth-Møller M, Greibe E, et al. Artificial sweeteners in breast milk: A clinical investigation with a kinetic perspective. *Nutrients*. 2022;14:2635. PubMed PMID: 35807817.

Substance Identification

Substance Name

Cyclamate

CAS Registry Number

100-88-9

Drug Class

Breast Feeding

Lactation

Milk, Human

Artificial Sweeteners

Sweetening Agents