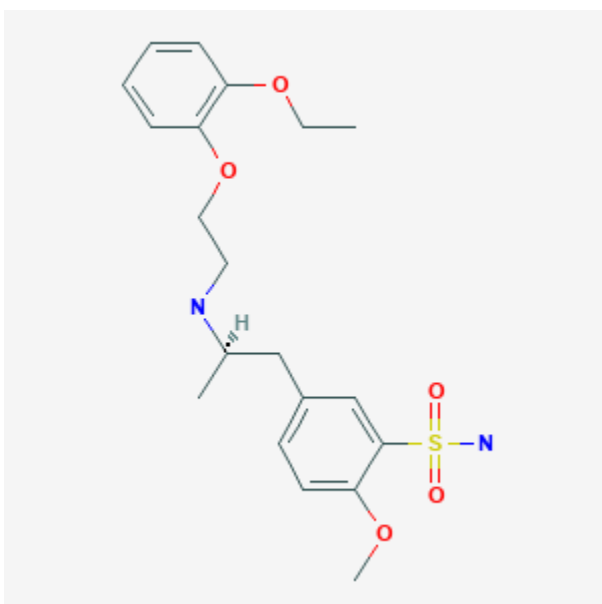




Tamsulosin

Revised: January 18, 2022.

CASRN: 106133-20-4



Drug Levels and Effects

Summary of Use during Lactation

Although tamsulosin is not FDA approved for use in women, it is used off-label in women with kidney stones. No information is available on the use of tamsulosin during breastfeeding. Because it is 94 to 99% bound to plasma proteins, amounts in milk are likely to be small. If tamsulosin is required by the mother, it is not a reason to discontinue breastfeeding. However, the breastfed infant should be carefully monitored.

Drug Levels

Maternal Levels. Relevant published information was not found as of the revision date.

Infant Levels. Relevant published information was not found as of the revision date.

Disclaimer: Information presented in this database is not meant as a substitute for professional judgment. You should consult your healthcare provider for breastfeeding advice related to your particular situation. The U.S. government does not warrant or assume any liability or responsibility for the accuracy or completeness of the information on this Site.

Attribution Statement: LactMed is a registered trademark of the U.S. Department of Health and Human Services.

Effects in Breastfed Infants

Relevant published information was not found as of the revision date.

Effects on Lactation and Breastmilk

Relevant published information was not found as of the revision date.

Substance Identification

Substance Name

Tamsulosin

CAS Registry Number

106133-20-4

Drug Class

Breast Feeding

Lactation

Adrenergic alpha-1 Receptor Antagonists

Urological Agents