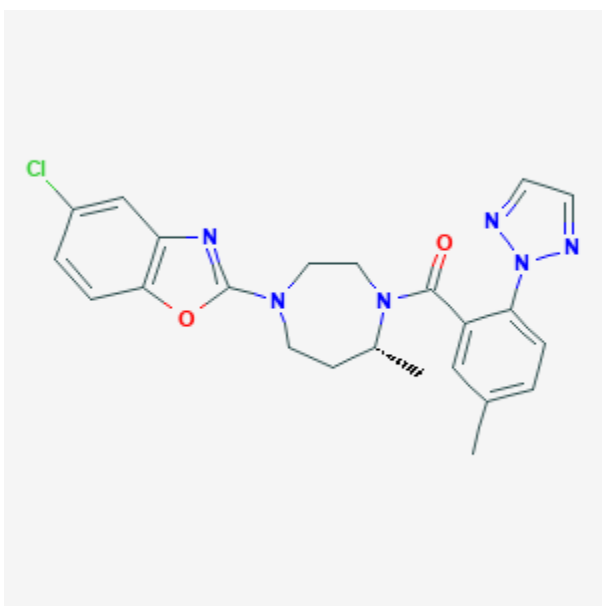




Suvorexant

Revised: February 15, 2023.

CASRN: 1030377-33-3



Drug Levels and Effects

Summary of Use during Lactation

No information is available on the use of suvorexant during breastfeeding. Because it is over 99% bound to plasma proteins, amounts in milk are likely to be small. If suvorexant is required by the mother, it is not a reason to discontinue breastfeeding. However, until more data become available, an alternate drug may be preferred, especially while nursing a newborn or preterm infant. If suvorexant is used, monitor the infant for sedation, poor feeding and poor weight gain.

Drug Levels

Maternal Levels. Relevant published information was not found as of the revision date.

Disclaimer: Information presented in this database is not meant as a substitute for professional judgment. You should consult your healthcare provider for breastfeeding advice related to your particular situation. The U.S. government does not warrant or assume any liability or responsibility for the accuracy or completeness of the information on this Site.

Attribution Statement: LactMed is a registered trademark of the U.S. Department of Health and Human Services.

Infant Levels. Relevant published information was not found as of the revision date.

Effects in Breastfed Infants

Relevant published information was not found as of the revision date.

Effects on Lactation and Breastmilk

Relevant published information was not found as of the revision date.

Alternate Drugs to Consider

Zaleplon, Zolpidem

Substance Identification

Substance Name

Suvorexant

CAS Registry Number

1030377-33-3

Drug Class

Breast Feeding

Lactation

Milk, Human

Hypnotics and Sedatives

Orexin Receptor Antagonists

Sleep Aids, Pharmaceutical