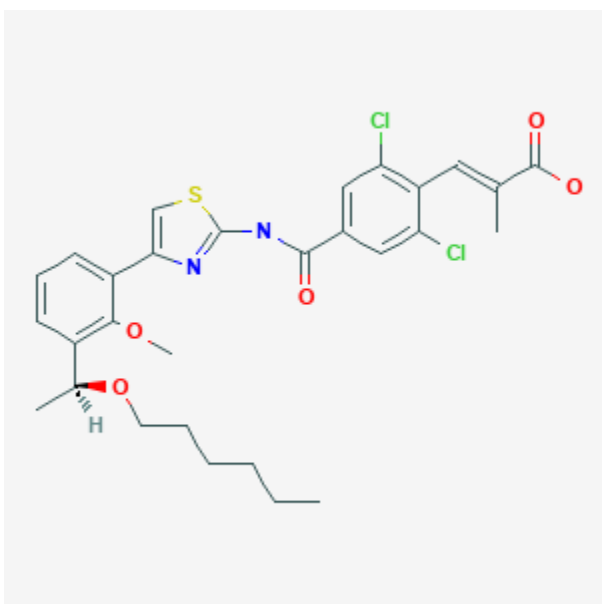




## Lusutrombopag

Revised: November 15, 2021.

CASRN: 110766-97-6



## Drug Levels and Effects

### Summary of Use during Lactation

No information is available on the use of lusutrombopag during breastfeeding. The manufacturer recommends avoiding breastfeeding during the use of lusutrombopag and for at least 28 days after the last dose.

### Drug Levels

*Maternal Levels.* Relevant published information was not found as of the revision date.

*Infant Levels.* Relevant published information was not found as of the revision date.

**Disclaimer:** Information presented in this database is not meant as a substitute for professional judgment. You should consult your healthcare provider for breastfeeding advice related to your particular situation. The U.S. government does not warrant or assume any liability or responsibility for the accuracy or completeness of the information on this Site.

**Attribution Statement:** LactMed is a registered trademark of the U.S. Department of Health and Human Services.

## Effects in Breastfed Infants

Relevant published information was not found as of the revision date.

## Effects on Lactation and Breastmilk

Relevant published information was not found as of the revision date.

## Substance Identification

### Substance Name

Lusutrombopag

### CAS Registry Number

1110766-97-6

### Drug Class

Breast Feeding

Lactation

Receptors, Thrombopoietin