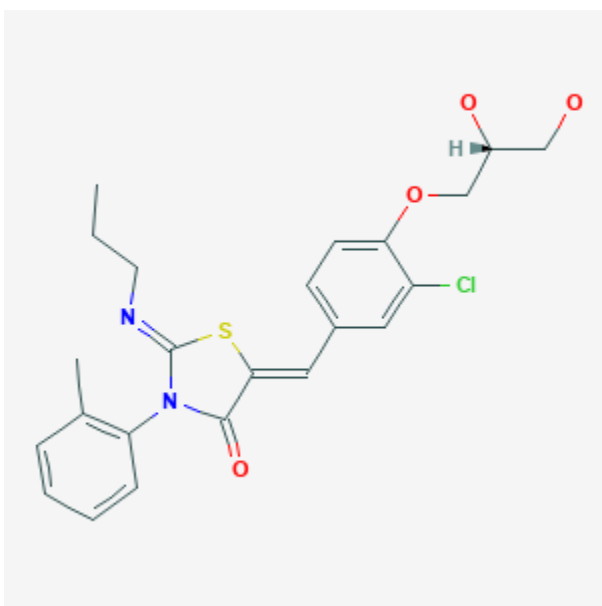




## Ponesimod

Revised: November 15, 2021.

CASRN: 854107-55-4



## Drug Levels and Effects

### Summary of Use during Lactation

Although ponesimod is highly bound in maternal plasma and unlikely to reach the breastmilk in large amounts, it is potentially toxic to the breastfed infant. Because there is no published experience with ponesimod during breastfeeding, expert opinion generally recommends that the closely related drug fingolimod should be avoided during breastfeeding, especially while nursing a newborn or preterm infant.[1-6] However, the manufacturer's labeling does not recommend against the use of ponesimod in breastfeeding.

### Drug Levels

*Maternal Levels.* Relevant published information was not found as of the revision date.

**Disclaimer:** Information presented in this database is not meant as a substitute for professional judgment. You should consult your healthcare provider for breastfeeding advice related to your particular situation. The U.S. government does not warrant or assume any liability or responsibility for the accuracy or completeness of the information on this Site.

**Attribution Statement:** LactMed is a registered trademark of the U.S. Department of Health and Human Services.

*Infant Levels.* Relevant published information was not found as of the revision date.

## Effects in Breastfed Infants

Relevant published information was not found as of the revision date.

## Effects on Lactation and Breastmilk

Relevant published information was not found as of the revision date.

## Alternate Drugs to Consider

(Multiple Sclerosis) [Glatiramer](#), [Immune Globulin](#), [Interferon Beta](#)

## References

1. Bove R, Alwan S, Friedman JM, et al. Management of multiple sclerosis during pregnancy and the reproductive years: A systematic review. *Obstet Gynecol.* 2014;124:1157–68. PubMed PMID: 25415167.
2. Cree BA. Update on reproductive safety of current and emerging disease-modifying therapies for multiple sclerosis. *Mult Scler.* 2013;19:835–43. PubMed PMID: 23319073.
3. Houtchens MK, Kolb CM. Multiple sclerosis and pregnancy: Therapeutic considerations. *J Neurol.* 2013;260:1202–14. PubMed PMID: 22926165.
4. Almas S, Vance J, Baker T, et al. Management of multiple sclerosis in the breastfeeding mother. *Mult Scler Int.* 2016;2016:6527458. PubMed PMID: 26966579.
5. Kaplan TB. Management of demyelinating disorders in pregnancy. *Neurol Clin.* 2019;37:17–30. PubMed PMID: 30470273.
6. Dobson R, Dassan P, Roberts M, et al. UK consensus on pregnancy in multiple sclerosis: 'Association of British Neurologists' guidelines. *Pract Neurol.* 2019;19:106–14. PubMed PMID: 30612100.

## Substance Identification

### Substance Name

Ponesimod

### CAS Registry Number

854107-55-4

### Drug Class

Breast Feeding

Lactation

Immunosuppressive Agents

Sphingosine 1 Phosphate Receptor Modulators