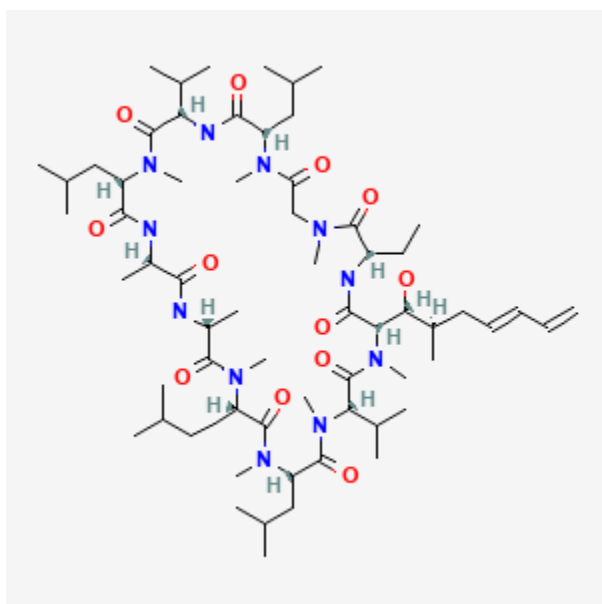




Revised: December 15, 2023.

CASRN: 515814-01-4



Drug Levels and Effects

Summary of Use during Lactation

No information is available on the excretion of voclosporin into breastmilk. Because voclosporin has a molecular weight of 1214 Da and is 97% plasma protein bound, it is unlikely to enter breastmilk in large amounts. However, an alternate drug may be preferred, especially while nursing a newborn or preterm infant.

Drug Levels

Maternal Levels. Relevant published information was not found as of the revision date.

Infant Levels. Relevant published information was not found as of the revision date.

Disclaimer: Information presented in this database is not meant as a substitute for professional judgment. You should consult your healthcare provider for breastfeeding advice related to your particular situation. The U.S. government does not warrant or assume any liability or responsibility for the accuracy or completeness of the information on this Site.

Attribution Statement: LactMed is a registered trademark of the U.S. Department of Health and Human Services.

Effects in Breastfed Infants

Relevant published information was not found as of the revision date.

Effects on Lactation and Breastmilk

Relevant published information was not found as of the revision date.

Alternate Drugs to Consider

Azathioprine, Cyclosporine, Tacrolimus, Prednisone

Substance Identification

Substance Name

Voclosporin

CAS Registry Number

515814-01-4

Drug Class

Breast Feeding

Lactation

Milk, Human

Immunosuppressive Agents