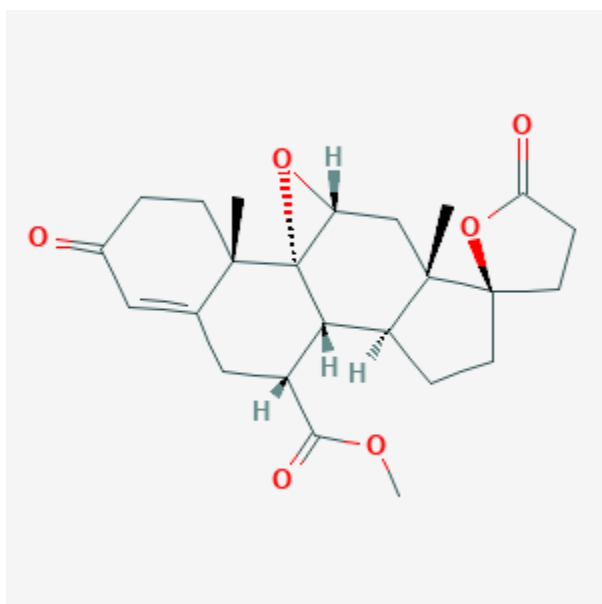




Eplerenone

Revised: September 19, 2022.

CASRN: 107724-20-9



Drug Levels and Effects

Summary of Use during Lactation

Data from one mother-infant pair indicate that eplerenone is poorly excreted into breastmilk. Until more data are available, eplerenone should be used with careful infant monitoring during breastfeeding.

Drug Levels

Maternal Levels. A woman with primary aldosteronism was receiving eplerenone 50 mg (0.79 mg/kg) once daily during pregnancy and postpartum. On postpartum day 7, eplerenone breastmilk concentrations were measured at 1, 1.5, and 11.5 hours after the dose. Eplerenone milk concentrations were 0, 104.1, and 61.3 mcg/L, respectively. On postpartum day 35, eplerenone milk concentrations were measured at 1, 4, 6.5, 13.5, 18.5, and

Disclaimer: Information presented in this database is not meant as a substitute for professional judgment. You should consult your healthcare provider for breastfeeding advice related to your particular situation. The U.S. government does not warrant or assume any liability or responsibility for the accuracy or completeness of the information on this Site.

Attribution Statement: LactMed is a registered trademark of the U.S. Department of Health and Human Services.

22 hours after the dose. Eplerenone milk concentrations were 130.2, 161.2, 55.8, 6.0, 0.7, and 0.3 mcg/L, respectively. The authors calculated a maximum daily infant dose of eplerenone, based on the maximum detected eplerenone concentration in breastmilk, to be 0.024 mg/kg daily, which corresponds to a weight-adjusted dosage of 3% relative to the maternal dosage.[1] The average daily and relative dosages would be considerably less.

Infant Levels. Relevant published information was not found as of the revision date.

Effects in Breastfed Infants

A woman with primary aldosteronism was receiving eplerenone 50 mg once daily (0.79 mg/kg daily) during pregnancy and postpartum. Her infant was partially breastfed for 3 months, with over 50% of nutrition from breastmilk. The infant developed normally and had no detectable adverse drug effects at the 1- or 3-month checkups.[1]

Effects on Lactation and Breastmilk

Relevant published information was not found as of the revision date.

Alternate Drugs to Consider

Spironolactone

References

1. Saito J, Mito A, Yakuwa N, et al. Eplerenone levels in maternal serum, cord blood, and breast milk during pregnancy and lactation. *Hypertens Res.* 2021;44:879–81. PubMed PMID: 33564177.

Substance Identification

Substance Name

Eplerenone

CAS Registry Number

107724-20-9

Drug Class

Breast Feeding

Lactation

Milk, Human

Antihypertensive Agents

Mineralocorticoid Receptor Antagonists