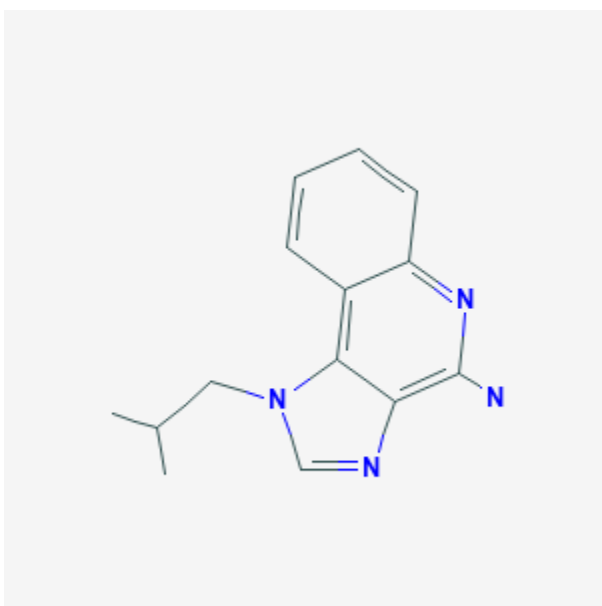




## Imiquimod

Revised: December 21, 2020.

CASRN: 99011-02-6



## Drug Levels and Effects

### Summary of Use during Lactation

No information is available on the use of imiquimod during breastfeeding. However, because the drug is used on a limited surface area and poorly absorbed into the maternal circulation, effects on the infant are unlikely. If imiquimod is required by the mother, it is not a reason to discontinue breastfeeding. Do not apply imiquimod to the breast or nipple and ensure that the infant's skin does not come into direct contact with the areas of skin that have been treated.

### Drug Levels

*Maternal Levels.* Relevant published information was not found as of the revision date.

---

**Disclaimer:** Information presented in this database is not meant as a substitute for professional judgment. You should consult your healthcare provider for breastfeeding advice related to your particular situation. The U.S. government does not warrant or assume any liability or responsibility for the accuracy or completeness of the information on this Site.

**Attribution Statement:** LactMed is a registered trademark of the U.S. Department of Health and Human Services.

*Infant Levels.* Relevant published information was not found as of the revision date.

### **Effects in Breastfed Infants**

Relevant published information was not found as of the revision date.

### **Effects on Lactation and Breastmilk**

Relevant published information was not found as of the revision date.

## **Substance Identification**

### **Substance Name**

Imiquimod

### **CAS Registry Number**

99011-02-6

### **Drug Class**

Breast Feeding

Lactation

Adjuvants, Immunologic

Antineoplastic Agents

Interferon Inducers