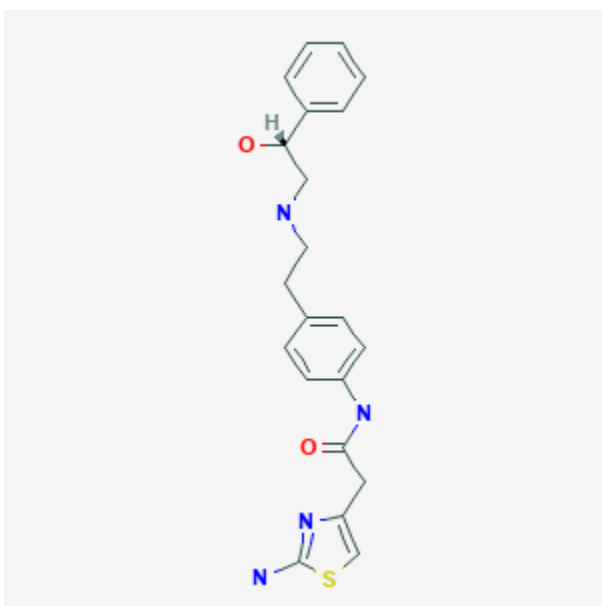




## Mirabegron

Revised: July 20, 2020.

CASRN: 223673-61-8



## Drug Levels and Effects

### Summary of Use during Lactation

No information is available on the use of mirabegron during breastfeeding. Because of moderately high protein binding and only relatively low bioavailability, exposure of the breastfed infant is likely to be low. If mirabegron is required by the mother, it is not a reason to discontinue breastfeeding, but until more data become available, an alternate drug may be preferred, especially while nursing a newborn or preterm infant.

### Drug Levels

*Maternal Levels.* Relevant published information was not found as of the revision date.

*Infant Levels.* Relevant published information was not found as of the revision date.

**Disclaimer:** Information presented in this database is not meant as a substitute for professional judgment. You should consult your healthcare provider for breastfeeding advice related to your particular situation. The U.S. government does not warrant or assume any liability or responsibility for the accuracy or completeness of the information on this Site.

**Attribution Statement:** LactMed is a registered trademark of the U.S. Department of Health and Human Services.

## Effects in Breastfed Infants

Relevant published information was not found as of the revision date.

## Effects on Lactation and Breastmilk

Relevant published information was not found as of the revision date.

## Substance Identification

### Substance Name

Mirabegron

### CAS Registry Number

223673-61-8

### Drug Class

Breast Feeding

Lactation