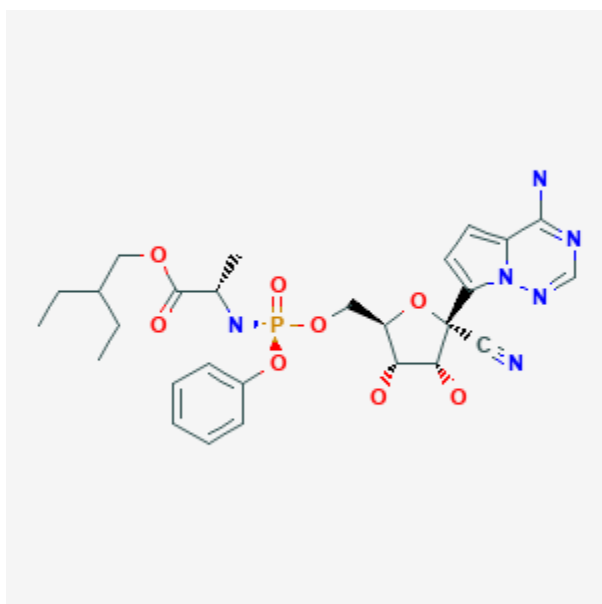




Remdesivir

Revised: February 15, 2024.

CASRN: 1809249-37-3



Drug Levels and Effects

Summary of Use during Lactation

Information from 5 patients indicate that milk levels of remdesivir and its active metabolite are very low in milk. Additionally, remdesivir is poorly absorbed orally, and the metabolite is only partially absorbed orally, so infants are not likely to absorb clinically important amounts of the drug from milk. Newborn infants have received intravenous remdesivir therapy for Ebola and for COVID-19 with no serious adverse drug reactions and it is FDA approved for use in infants of at least 28 days and weighing 3 kg.[1-3] Infants exposed via breastmilk have also not had any reported adverse reactions. Given this information, mothers receiving remdesivir do not need to avoid nursing, but until more data are available, remdesivir should be used with careful infant monitoring during breastfeeding.[4] The most common adverse effects reported after intravenous infusion include elevated

Disclaimer: Information presented in this database is not meant as a substitute for professional judgment. You should consult your healthcare provider for breastfeeding advice related to your particular situation. The U.S. government does not warrant or assume any liability or responsibility for the accuracy or completeness of the information on this Site.

Attribution Statement: LactMed is a registered trademark of the U.S. Department of Health and Human Services.

aminotransferase and bilirubin levels and other liver enzyme elevations, diarrhea, rash, renal impairment and hypotension.

Drug Levels

Maternal Levels. Two days after delivery, a woman was diagnosed with a SARS-CoV-2 infection. She was given 200 mg of remdesivir on the first day of therapy, then 100 mg daily for 4 more days. Although not stated, all doses are presumed to have been given intravenously. On day 5 of therapy, milk was collected just before the dose and 1, 3, 6, and 24 hours after the last dose. Remdesivir and its metabolite GS-441524 were measured in milk. The concentration of remdesivir in milk was 1.29 mcg/L one hour before administration on day 5, but undetectable (<0.5 mcg/L) in the other samples. The concentration of the active metabolite GS-441524 in the milk samples were 13.5 mcg/L before the fifth dose, 285 mcg/L at 3 hours after the dose and 64.3 mcg/L at 24 hours after the dose. The authors estimated the relative infant doses of remdesivir and GS-441524 in breastmilk as 0.007% and 1.6%, respectively. The half-life of GS-441524 in milk was estimated to be 9.3 hours.[5]

Four women with COVID-19 who received remdesivir provided 17 milk samples for analysis of remdesivir and its active metabolite GS-441524. All of the milk samples had unquantifiable (<100 mcg/L) concentrations of remdesivir. Eleven of the samples contained unquantifiable (<100 mcg/L) concentrations of GS-441524. The highest concentration of the metabolite in the remaining 6 samples from one woman was 168 mcg/L. Using this “worst-case” value, the infant dose would be 25.2 mcg/kg daily, which would be a relative infant dose of <5%.[6]

Infant Levels. Relevant published information was not found as of the revision date.

Effects in Breastfed Infants

The manufacturer reports that 11 breastfed infants were exposed to remdesivir in breastmilk from pharmacovigilance reports. The reports do not indicate adverse effects on breastfed infants from exposure to remdesivir and its metabolite through breastmilk.

Effects on Lactation and Breastmilk

Relevant published information was not found as of the revision date.

Alternate Drugs to Consider

[Nirmatrelvir](#)

References

1. Dörnemann J, Burzio C, Ronsse A, et al. First newborn baby to receive experimental therapies survives Ebola virus disease. *J Infect Dis* 2017;215:171-4. PubMed PMID: 28073857.
2. Mulangu S, Dodd LE, Davey RT, Jr, et al. A randomized, controlled trial of Ebola virus disease therapeutics. *N Engl J Med* 2019;381:2293-303. PubMed PMID: 31774950.
3. Frauenfelder C, Brierley J, Whittaker E, et al. Infant with SARS-CoV-2 infection causing severe lung disease treated with remdesivir. *Pediatrics* 2020;146:e20201701. PubMed PMID: 32554811.
4. Aleissa MM, Silverman EA, Paredes Acosta LM, et al. New perspectives on antimicrobial agents: Remdesivir treatment for COVID-19. *Antimicrob Agents Chemother* 2021;65:e01814-20. PubMed PMID: 33139290.
5. Wada YS, Saito J, Hashii Y, et al. Remdesivir and human milk: A case study. *J Hum Lact* 2022;38:248-51. PubMed PMID: 35189734.
6. Bertrand K, Sepulveda Y, Spiegel BJ, et al. Concentrations of remdesivir and GS-441524 in human milk from lactating individuals diagnosed with COVID-19. *Pediatr Res* 2024. PubMed PMID: 38347172.

Substance Identification

Substance Name

Remdesivir

CAS Registry Number

1809249-37-3

Drug Class

Breast Feeding

Lactation

Milk, Human

Antimetabolites

Antiviral Agents