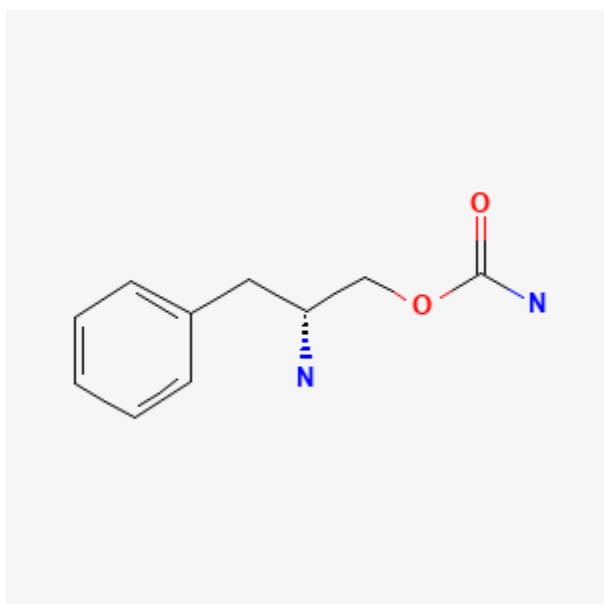




Solriamfetol

Revised: July 15, 2023.

CASRN: 178429-62-4



Drug Levels and Effects

Summary of Use during Lactation

No information is available on the clinical use of solriamfetol during breastfeeding. However, amounts in breastmilk appear to be low and would not be expected to cause any adverse effects in breastfed infants. If solriamfetol is required by the mother, it is not a reason to discontinue breastfeeding. Monitor the breastfed infant for adverse reactions, such as agitation, insomnia, and reduced weight gain.

Drug Levels

Maternal Levels. The manufacturer reports that a single-dose milk and plasma lactation study was conducted in 6 healthy adult lactating women who were between 10 days and 52 weeks postpartum. They were administered a

Disclaimer: Information presented in this database is not meant as a substitute for professional judgment. You should consult your healthcare provider for breastfeeding advice related to your particular situation. The U.S. government does not warrant or assume any liability or responsibility for the accuracy or completeness of the information on this Site.

Attribution Statement: LactMed is a registered trademark of the U.S. Department of Health and Human Services.

single oral 150 mg dose of solriamfetol. The daily infant dose is 0.112 mg/kg based on infant weight of 6 kg. The cumulative median amount excreted in breastmilk was 0.67 mg over 72 hours, which is about 5.5% of the weight-adjusted maternal dose. Of the total amount of solriamfetol excreted in breastmilk over 72 hours, approximately 78% and 98% were excreted by 8 and 24 hours, respectively, with an apparent mean elimination half-life in breast milk of about 5 hours.

Infant Levels. Relevant published information was not found as of the revision date.

Effects in Breastfed Infants

Relevant published information was not found as of the revision date.

Effects on Lactation and Breastmilk

Relevant published information was not found as of the revision date.

Alternate Drugs to Consider

(Narcolepsy) Amphetamine, Armodafinil, Dextroamphetamine, Lisdexamfetamine, Methylphenidate, Modafinil, Oxybate Salts, Pitolisant

Substance Identification

Substance Name

Solriamfetol

CAS Registry Number

178429-62-4

Drug Class

Breastfeeding

Lactation

Milk, Human

Adrenergic Agents

Carbamates

Central Nervous System Stimulants

Dopamine Agents

Wakefulness-Promoting Agents