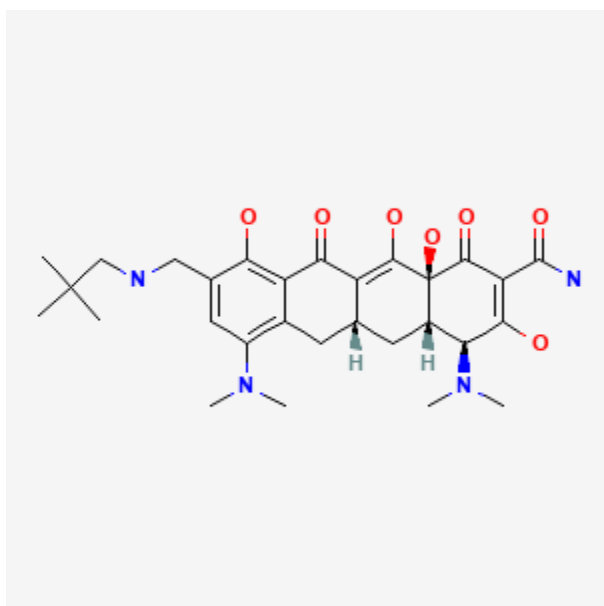




## Omadacycline

Revised: September 21, 2020.

CASRN: 389139-89-3



## Drug Levels and Effects

### Summary of Use during Lactation

No information is available on the use of omadacycline during breastfeeding. It is unknown how much omadacycline is excreted into breastmilk, but the drug is only about 35% absorbed orally under optimal circumstances, and is probably less from milk because of its calcium content. The manufacturer states that breastfeeding is not recommended during treatment and for 4 days after the last dose. If an infant is breastfed, monitor the infant for possible effects on the gastrointestinal flora, such as diarrhea, candidiasis (e.g., thrush, diaper rash) or rarely, blood in the stool indicating possible antibiotic-associated colitis. As a theoretical precaution, avoid prolonged or repeat courses during nursing.

**Disclaimer:** Information presented in this database is not meant as a substitute for professional judgment. You should consult your healthcare provider for breastfeeding advice related to your particular situation. The U.S. government does not warrant or assume any liability or responsibility for the accuracy or completeness of the information on this Site.

**Attribution Statement:** LactMed is a registered trademark of the U.S. Department of Health and Human Services.

## Drug Levels

*Maternal Levels.* Relevant published information was not found as of the revision date.

*Infant Levels.* Relevant published information was not found as of the revision date.

## Effects in Breastfed Infants

Relevant published information was not found as of the revision date.

## Effects on Lactation and Breastmilk

Relevant published information was not found as of the revision date.

## Substance Identification

### Substance Name

Omadacycline

### CAS Registry Number

389139-89-3

### Drug Class

Breast Feeding

Lactation

Anti-Infective Agents

Antibacterial Agents

Tetracyclines