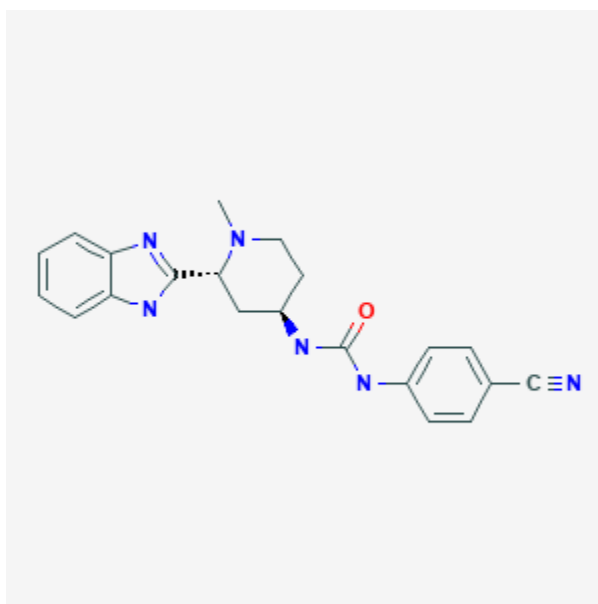




Glasdegib

Revised: December 3, 2018.

CASRN: 1095173-27-5



Drug Levels and Effects

Summary of Use during Lactation

No information is available on glasdegib during breastfeeding. It is 91% bound to plasma proteins, so amounts in milk are likely to be low. With a half-life of 17.4 hours, it is likely to be eliminated from milk by 4 to 7 days after the last dose. However, the manufacturer recommends that breastfeeding be discontinued during glasdegib therapy and for at least 30 days after the last dose.

Drug Levels

Maternal Levels. Relevant published information was not found as of the revision date.

Infant Levels. Relevant published information was not found as of the revision date.

Disclaimer: Information presented in this database is not meant as a substitute for professional judgment. You should consult your healthcare provider for breastfeeding advice related to your particular situation. The U.S. government does not warrant or assume any liability or responsibility for the accuracy or completeness of the information on this Site.

Attribution Statement: LactMed is a registered trademark of the U.S. Department of Health and Human Services.

Effects in Breastfed Infants

Relevant published information was not found as of the revision date.

Effects on Lactation and Breastmilk

Relevant published information was not found as of the revision date.

Substance Identification

Substance Name

Glasdegib

CAS Registry Number

1095173-27-5

Drug Class

Breast Feeding

Lactation

Antineoplastic Agents

Enzyme Inhibitors

Protein Kinase Inhibitors

Signal Transduction Inhibitors