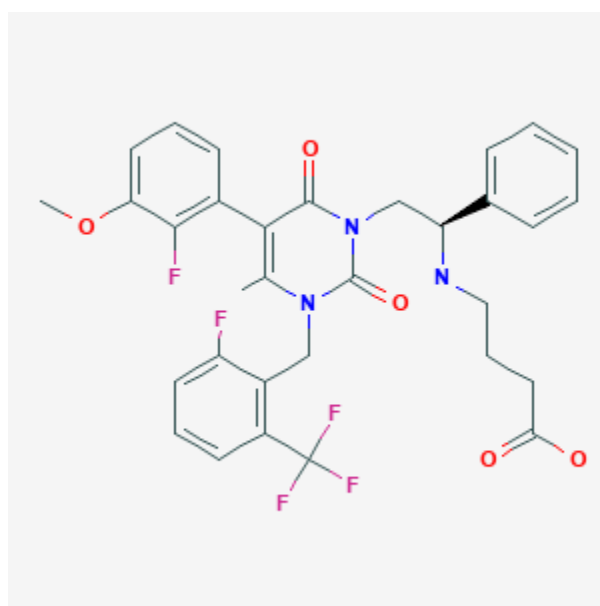




Elagolix

Revised: February 7, 2019.

CASRN: 834153-87-6



Drug Levels and Effects

Summary of Use during Lactation

No information is available on the use of elagolix during breastfeeding. Elagolix is 80% protein bound, has a half-life of 4 to 6 hours, and it is a peptide that is likely digested in the infant's gastrointestinal tract, so it is unlikely to reach clinically important levels in infant serum. However, because no information is available on the use of elagolix during breastfeeding caution should be used, especially while nursing a newborn or preterm infant.

Drug Levels

Maternal Levels. Relevant published information was not found as of the revision date.

Disclaimer: Information presented in this database is not meant as a substitute for professional judgment. You should consult your healthcare provider for breastfeeding advice related to your particular situation. The U.S. government does not warrant or assume any liability or responsibility for the accuracy or completeness of the information on this Site.

Attribution Statement: LactMed is a registered trademark of the U.S. Department of Health and Human Services.

Infant Levels. Relevant published information was not found as of the revision date.

Effects in Breastfed Infants

Relevant published information was not found as of the revision date.

Effects on Lactation and Breastmilk

Relevant published information was not found as of the revision date.

Substance Identification

Substance Name

Elagolix

CAS Registry Number

834153-87-6

Drug Class

Breast Feeding

Lactation

GnRH Receptor Antagonists

Gonadotropin-Releasing Hormone Antagonists