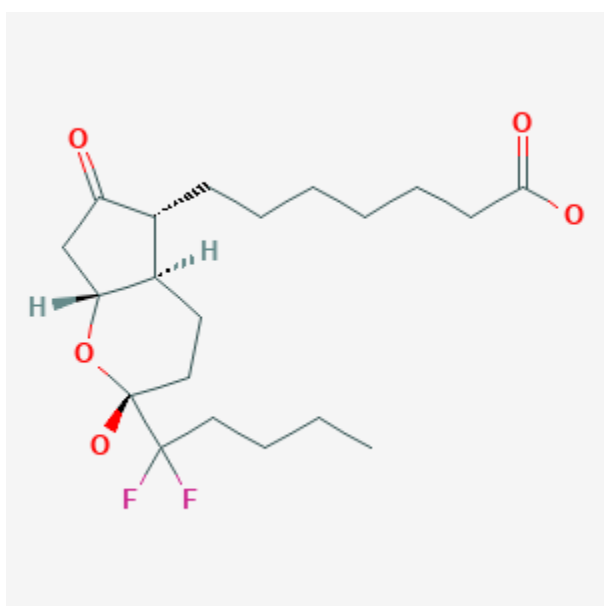




Lubiprostone

Revised: November 16, 2020.

CASRN: 136790-76-6; 333963-40-9



Drug Levels and Effects

Summary of Use during Lactation

No information is available on the use of lubiprostone during breastfeeding. The manufacturer reports that the drug and its metabolite are undetectable in rat milk and would not be expected to cause any adverse effects in a breastfed infant. Monitor the breastfed infant for diarrhea.

Drug Levels

Maternal Levels. Relevant published information was not found as of the revision date.

Infant Levels. Relevant published information was not found as of the revision date.

Disclaimer: Information presented in this database is not meant as a substitute for professional judgment. You should consult your healthcare provider for breastfeeding advice related to your particular situation. The U.S. government does not warrant or assume any liability or responsibility for the accuracy or completeness of the information on this Site.

Attribution Statement: LactMed is a registered trademark of the U.S. Department of Health and Human Services.

Effects in Breastfed Infants

Relevant published information was not found as of the revision date.

Effects on Lactation and Breastmilk

Relevant published information was not found as of the revision date.

Alternate Drugs to Consider

Linaclotide, Plecanatide, Prucalopride, Psyllium, Tenapanor

Substance Identification

Substance Name

Lubiprostone

CAS Registry Number

136790-76-6 333963-40-9

Drug Class

Breast Feeding

Lactation

Chloride Channel Agonists

Gastrointestinal Agents

Membrane Transport Modulators

Laxatives