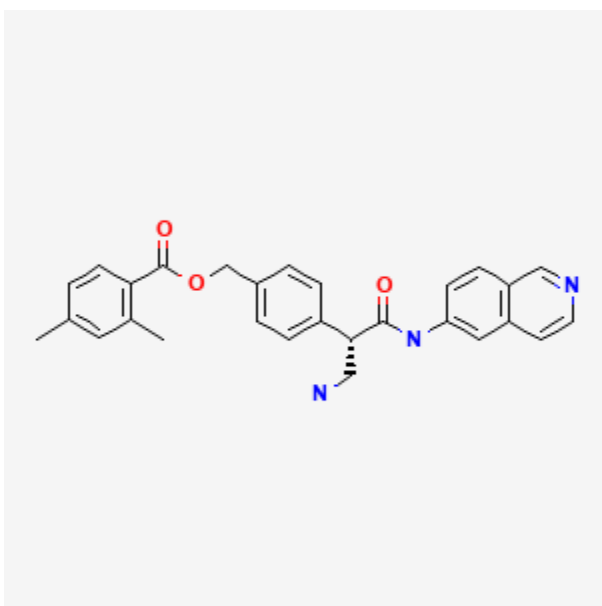




Netarsudil

Revised: April 20, 2020.

CASRN: 1254032-66-0



Drug Levels and Effects

Summary of Use during Lactation

No information is available on the use of netarsudil during breastfeeding. Because netarsudil poorly absorbed by the mother after administration to the eye, it is unlikely to adversely affect the breastfed infant. Until more data become available, netarsudil should be used with caution during breastfeeding, especially while nursing a newborn or preterm infant. To decrease the amount of drug that reaches the breastmilk after using eye drops, place pressure over the tear duct by the corner of the eye for 1 minute or more, then remove the excess solution with an absorbent tissue.

Disclaimer: Information presented in this database is not meant as a substitute for professional judgment. You should consult your healthcare provider for breastfeeding advice related to your particular situation. The U.S. government does not warrant or assume any liability or responsibility for the accuracy or completeness of the information on this Site.

Attribution Statement: LactMed is a registered trademark of the U.S. Department of Health and Human Services.

Drug Levels

Maternal Levels. Relevant published information was not found as of the revision date.

Infant Levels. Relevant published information was not found as of the revision date.

Effects in Breastfed Infants

Relevant published information was not found as of the revision date.

Effects on Lactation and Breastmilk

Relevant published information was not found as of the revision date.

Substance Identification

Substance Name

Netarsudil

CAS Registry Number

1254032-66-0

Drug Class

Breast Feeding

Lactation

Antiglaucoma Agents

Rho Kinase Inhibitors