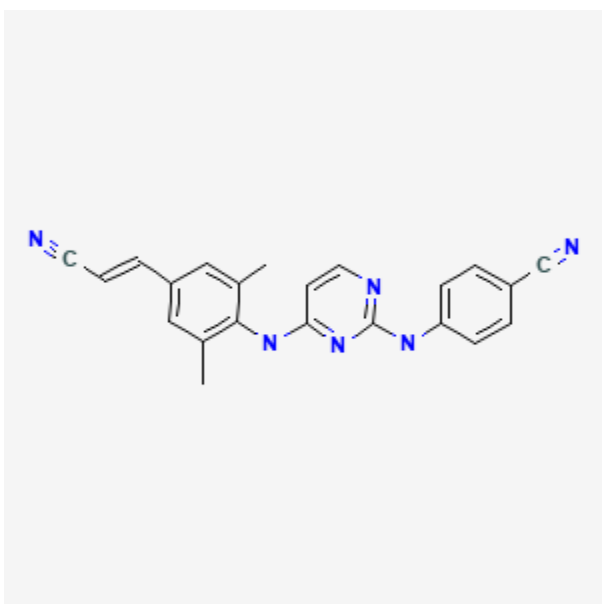




Rilpivirine

Revised: July 15, 2024.

CASRN: 500287-72-9



Drug Levels and Effects

Summary of Use during Lactation

Limited information indicates that maternal rilpivirine doses of 25 mg daily produce low levels in milk and infant serum. Until more data become available, an alternate drug may be preferred, especially while nursing a newborn or preterm infant. Achieving and maintaining viral suppression with antiretroviral therapy decreases breastfeeding transmission risk to less than 1%, but not zero. Individuals with HIV who are on antiretroviral therapy with a sustained undetectable viral load and who choose to breastfeed should be supported in this decision. If a viral load is not suppressed, banked pasteurized donor milk or formula is recommended.[1,2]

Disclaimer: Information presented in this database is not meant as a substitute for professional judgment. You should consult your healthcare provider for breastfeeding advice related to your particular situation. The U.S. government does not warrant or assume any liability or responsibility for the accuracy or completeness of the information on this Site.

Attribution Statement: LactMed is a registered trademark of the U.S. Department of Health and Human Services.

Drug Levels

Maternal Levels. Two mothers taking rilpivirine 25 mg once daily provided milk samples at a median of 15.5 hours after a dose. The mean drug concentration in milk was 123 mcg/L, which resulted in an estimated infant dosage of 20 mcg/kg daily.[3]

Infant Levels. An infant was breastfed by a mother taking rilpivirine 25 mg once daily, although the extent of breastfeeding was not stated. The infant's serum concentrations taken 16 hours after maternal drug intake at 1 month of age was 4 mcg/L.[3]

Effects in Breastfed Infants

Relevant published information was not found as of the revision date.

Effects on Lactation and Breastmilk

Relevant published information was not found as of the revision date.

References

1. World Health Organization. Consolidated guidelines on HIV prevention, testing, treatment, service delivery and monitoring: Recommendations for a public health approach. 2021. Available at: <https://www.who.int/publications/i/item/9789240031593>
2. Department of Health and Human Services. Recommendations for the use of antiretroviral drugs during pregnancy and interventions to reduce perinatal HIV transmission in the United States. 2024. Available at: <https://clinicalinfo.hiv.gov/sites/default/files/guidelines/documents/perinatal-hiv/guidelines-perinatal.pdf>
3. Aebi-Popp K, Kahlert CR, Crisinel PA, et al. Transfer of antiretroviral drugs into breastmilk: A prospective study from the Swiss Mother and Child HIV Cohort Study. *J Antimicrob Chemother* 2022;77:3436-42. PubMed PMID: 36177836.

Substance Identification

Substance Name

Rilpivirine

CAS Registry Number

500287-72-9

Drug Class

Breast Feeding

Lactation

Milk, Human

Anti-Infective Agents

Antiviral Agents

Anti-HIV Agents

Anti-Retroviral Agents

Reverse Transcriptase Inhibitors