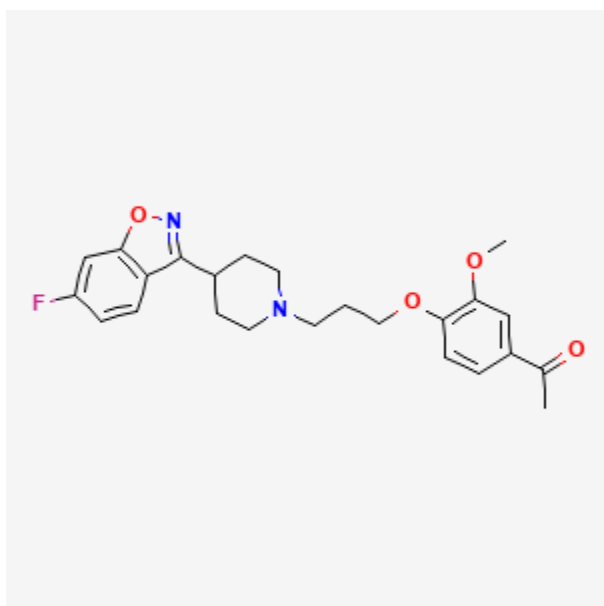




## Iloperidone

Revised: November 30, 2022.

CASRN: 133454-47-4



## Drug Levels and Effects

### Summary of Use during Lactation

Because no information is available on the use of iloperidone during breastfeeding, an alternate drug may be preferred, especially while nursing a newborn or preterm infant.

### Drug Levels

*Maternal Levels.* Relevant published information was not found as of the revision date.

*Infant Levels.* Relevant published information was not found as of the revision date.

**Disclaimer:** Information presented in this database is not meant as a substitute for professional judgment. You should consult your healthcare provider for breastfeeding advice related to your particular situation. The U.S. government does not warrant or assume any liability or responsibility for the accuracy or completeness of the information on this Site.

**Attribution Statement:** LactMed is a registered trademark of the U.S. Department of Health and Human Services.

## Effects in Breastfed Infants

Patients enlisted in the National Pregnancy Registry for Atypical Antipsychotics who were taking a second-generation antipsychotic drug while breastfeeding (n = 576) were compared to control breastfeeding patients who were not treated with a second-generation antipsychotic (n = 818). Of the patients who were taking a second-generation antipsychotic drug, 60.4% were on more than one psychotropic. A review of the pediatric medical records, no adverse effects were noted among infants exposed or not exposed to second-generation antipsychotic monotherapy or to polytherapy.[1] The number of women taking iloperidone was not reported.

## Effects on Lactation and Breastmilk

Iloperidone causes minimal increases in serum prolactin.[2,3] The prolactin level in a mother with established lactation may not affect her ability to breastfeed.

Patients enlisted in the National Pregnancy Registry for Atypical Antipsychotics who were taking a second-generation antipsychotic drug while breastfeeding (n = 576) were compared to control breastfeeding patients who had primarily diagnoses of major depressive disorder and anxiety disorders, most often treated with SSRI or SNRI antidepressants, but not with a second-generation antipsychotic (n = 818). Among women on a second-generation antipsychotic, 60.4% were on more than one psychotropic compared with 24.4% among women in the control group. Of the women on a second-generation antipsychotic, 59.3% reported “ever breastfeeding” compared to 88.2% of women in the control group. At 3 months postpartum, 23% of women on a second-generation antipsychotic were exclusively breastfeeding compared to 47% of women in the control group.[1] The number of women taking iloperidone was not reported.

## Alternate Drugs to Consider

Haloperidol, Olanzapine, Quetiapine, Risperidone

## References

1. Viguera AC, Vanderkruik R, Gaccione P, et al. Breastfeeding practices among women taking second-generation antipsychotics: findings from the National Pregnancy Registry for Atypical Antipsychotics. *Arch Womens Ment Health*. 2022;25:511–6. PubMed PMID: 34318375.
2. Cutler AJ. Iloperidone: A new option for the treatment of schizophrenia. *Expert Rev Neurother*. 2009;9:1727–41. PubMed PMID: 19951132.
3. Weiden PJ, Cutler AJ, Polymeropoulos MH, et al. Safety profile of iloperidone: A pooled analysis of 6-week acute-phase pivotal trials. *J Clin Psychopharmacol*. 2008;28(2 Suppl 1):S12–9. PubMed PMID: 18334908.

## Substance Identification

### Substance Name

Iloperidone

### CAS Registry Number

133454-47-4

### Drug Class

Breast Feeding

Lactation

Milk, Human

Antipsychotic Agents