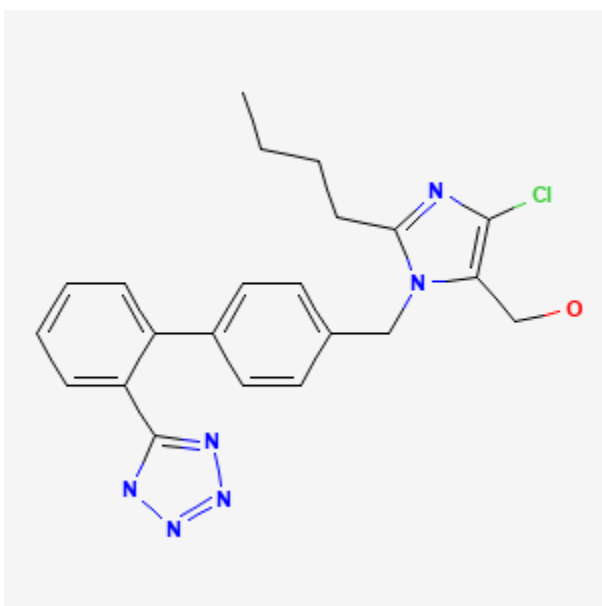




## Losartan

Revised: January 20, 2020.

CASRN: 114798-26-4



## Drug Levels and Effects

### Summary of Use during Lactation

Because no information is available on the use of losartan during breastfeeding, an alternate drug may be preferred, especially while nursing a newborn or preterm infant.

### Drug Levels

*Maternal Levels.* Relevant published information was not found as of the revision date.

*Infant Levels.* Relevant published information was not found as of the revision date.

**Disclaimer:** Information presented in this database is not meant as a substitute for professional judgment. You should consult your healthcare provider for breastfeeding advice related to your particular situation. The U.S. government does not warrant or assume any liability or responsibility for the accuracy or completeness of the information on this Site.

**Attribution Statement:** LactMed is a registered trademark of the U.S. Department of Health and Human Services.

## Effects in Breastfed Infants

Relevant published information was not found as of the revision date.

## Effects on Lactation and Breastmilk

Relevant published information was not found as of the revision date.

## Alternate Drugs to Consider

Candesartan, Captopril, Benazepril, Enalapril, Quinapril

## Substance Identification

### Substance Name

Losartan

### CAS Registry Number

114798-26-4

### Drug Class

Breast Feeding

Lactation

Antihypertensive Agents

Angiotensin II Type 1 Receptor Blockers