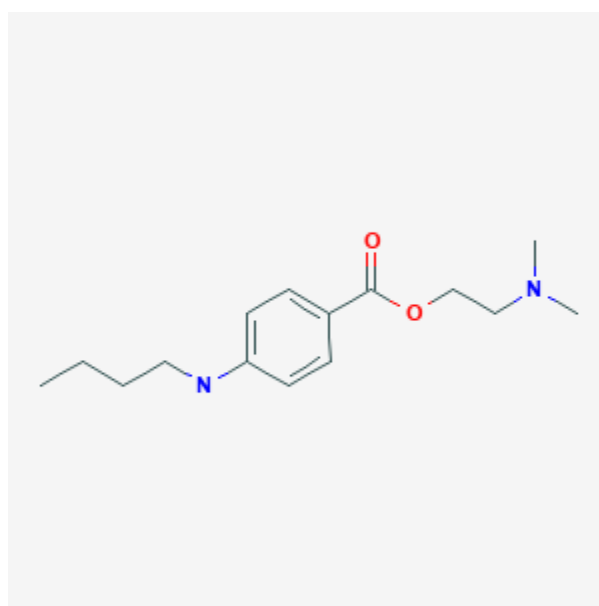




Tetracaine

Revised: December 3, 2018.

CASRN: 94-24-6



Drug Levels and Effects

Summary of Use during Lactation

No information is available on the use of tetracaine during breastfeeding. Based on the low excretion of other local anesthetics into breastmilk, a single dose of injected tetracaine during breastfeeding, such as for a dental procedure, is unlikely to adversely affect the breastfed infant. However, an alternate drug may be preferred, especially while nursing a newborn or preterm infant. Topical application of tetracaine to the mother is unlikely to affect her breastfed infant if it is applied away from the breast. Only water-miscible cream or gel products should be applied to the breast because ointments may expose the infant to high levels of mineral paraffins via licking.[1]

Disclaimer: Information presented in this database is not meant as a substitute for professional judgment. You should consult your healthcare provider for breastfeeding advice related to your particular situation. The U.S. government does not warrant or assume any liability or responsibility for the accuracy or completeness of the information on this Site.

Attribution Statement: LactMed is a registered trademark of the U.S. Department of Health and Human Services.

Drug Levels

Maternal Levels. Relevant published information was not found as of the revision date.

Infant Levels. Relevant published information was not found as of the revision date.

Effects in Breastfed Infants

Relevant published information was not found as of the revision date.

Effects on Lactation and Breastmilk

Relevant published information was not found as of the revision date.

References

1. Noti A, Grob K, Biedermann M et al. Exposure of babies to C(15)-C(45) mineral paraffins from human milk and breast salves. *Regul Toxicol Pharmacol.* 2003;38:317-25. PubMed PMID: 14623482.

Substance Identification

Substance Name

Tetracaine

CAS Registry Number

94-24-6

Drug Class

Breast Feeding

Lactation

Anesthetics, Local