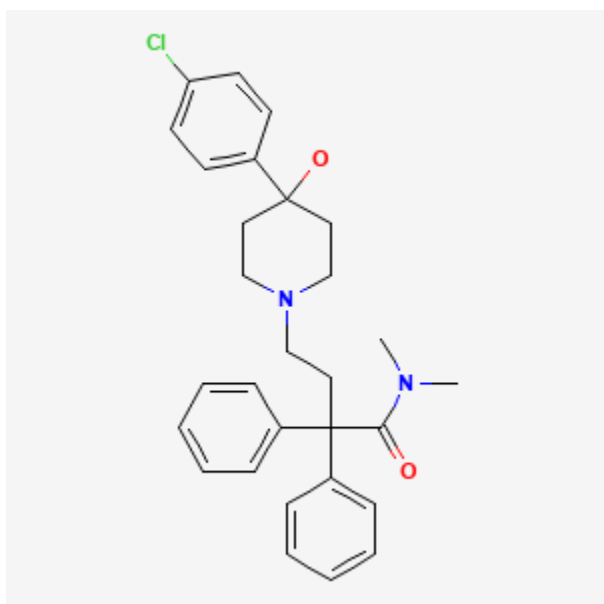




## Loperamide

Revised: June 15, 2024.

CASRN: 53179-11-6



## Drug Levels and Effects

### Summary of Use during Lactation

The amount of loperamide that enters milk from a prodrug of loperamide is minimal. Use of loperamide during breastfeeding is unlikely to affect the infant with standard doses.[1,2]

### Drug Levels

*Maternal Levels.* Loperamide has not been studied during breastfeeding, but the loperamide prodrug, loperamide oxide, has been studied in a dosage of 2 doses of 4 mg given 12 hours apart to 6 women 18 to 47 hours after delivery. Median loperamide milk concentrations were 0.18 mcg/L at 12 hours after the first dose, 0.27 mcg/L at 6 hours after the second dose, and 0.19 mcg/L at 24 hours after the second dose.[3]

**Disclaimer:** Information presented in this database is not meant as a substitute for professional judgment. You should consult your healthcare provider for breastfeeding advice related to your particular situation. The U.S. government does not warrant or assume any liability or responsibility for the accuracy or completeness of the information on this Site.

**Attribution Statement:** LactMed is a registered trademark of the U.S. Department of Health and Human Services.

*Infant Levels.* Relevant published information was not found as of the revision date.

## Effects in Breastfed Infants

Relevant published information was not found as of the revision date.

## Effects on Lactation and Breastmilk

Relevant published information was not found as of the revision date.

## References

1. Mahadevan U, Kane S. American Gastroenterological Association Institute Technical Review on the Use of Gastrointestinal Medications in Pregnancy. *Gastroenterology* 2006;131:283-311. PubMed PMID: 16831611.
2. Schulze H, Esters P, Dignass A. Review article: The management of Crohn's disease and ulcerative colitis during pregnancy and lactation. *Aliment Pharmacol Ther* 2014;40:991-1008. PubMed PMID: 25200000.
3. Nikodem VC, Hofmeyr GJ. Secretion of the antidiarrhoeal agent loperamide oxide in breast milk. *Eur J Clin Pharmacol* 1992;42:695-6. PubMed PMID: 1623917.

## Substance Identification

### Substance Name

Loperamide

### CAS Registry Number

53179-11-6

### Drug Class

Breast Feeding

Lactation

Milk, Human

Antidiarrheals

Gastrointestinal Agents