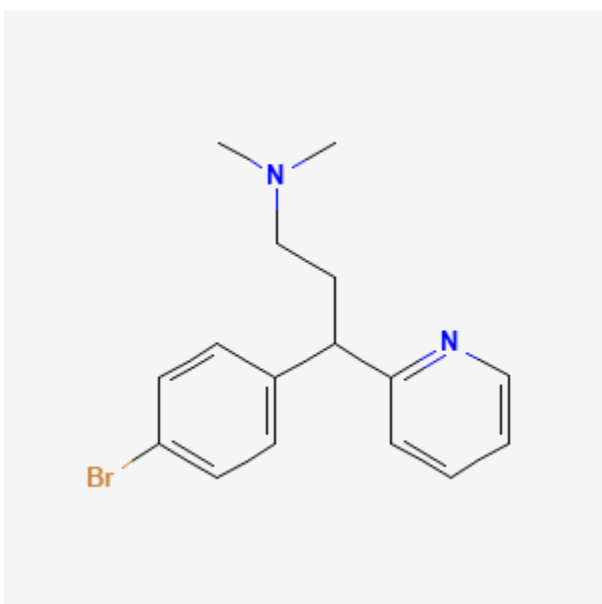




Brompheniramine

Revised: September 20, 2021.

CASRN: 86-22-6



Drug Levels and Effects

Summary of Use during Lactation

Small, occasional doses of brompheniramine would not be expected to cause any adverse effects in breastfed infants. Larger doses or more prolonged use may cause effects in the infant or decrease the milk supply, particularly in combination with a sympathomimetic such as pseudoephedrine or before lactation is well established. Single bedtime doses after the last feeding of the day may be adequate for many women and will minimize any effects of the drug. The nonsedating antihistamines are preferred alternatives.

Drug Levels

Maternal Levels. Relevant published information was not found as of the revision date.

Disclaimer: Information presented in this database is not meant as a substitute for professional judgment. You should consult your healthcare provider for breastfeeding advice related to your particular situation. The U.S. government does not warrant or assume any liability or responsibility for the accuracy or completeness of the information on this Site.

Attribution Statement: LactMed is a registered trademark of the U.S. Department of Health and Human Services.

Infant Levels. Relevant published information was not found as of the revision date.

Effects in Breastfed Infants

Irritability and disturbed sleep were reported in an 11-week-old breastfed infant whose mother was taking a product containing dexbrompheniramine and etafedrine (d-isoephedrine).[1] These side effects were possibly caused by dexbrompheniramine in breastmilk, but could have been caused by the etafedrine or both drugs.

In one telephone follow-up study, mothers reported irritability and colicky symptoms in 10% of infants exposed to various antihistamines and drowsiness was reported in 1.6% of infants. None of the reactions required medical attention and none of the infants were exposed to brompheniramine or dexbrompheniramine.[2]

Effects on Lactation and Breastmilk

Antihistamines in relatively high doses given by injection can decrease basal serum prolactin in nonlactating women and in early postpartum women.[3,4] However, suckling-induced prolactin secretion is not affected by antihistamine pretreatment of postpartum mothers.[3] Whether lower oral doses of brompheniramine have the same effect on serum prolactin or whether the effects on prolactin have any consequences on breastfeeding success have not been studied. The prolactin level in a mother with established lactation may not affect her ability to breastfeed.

Alternate Drugs to Consider

[Desloratadine](#), [Fexofenadine](#), [Loratadine](#)

References

1. Mortimer EA, Jr. Drug toxicity from breast milk? *Pediatrics* 1977;60:780-1. Letter. PMID: 917668
2. Ito S, Blajchman A, Stephenson M, et al. Prospective follow-up of adverse reactions in breast-fed infants exposed to maternal medication. *Am J Obstet Gynecol.* 1993;168:1393-9. PubMed PMID: 8498418.
3. Messinis IE, Souvatzoglou A, Fais N, et al. Histamine H1 receptor participation in the control of prolactin secretion in postpartum. *J Endocrinol Invest.* 1985;8:143-6. PubMed PMID: 3928731.
4. Pontiroli AE, De Castro e Silva E, Mazzoleni F, et al. The effect of histamine and H1 and H2 receptors on prolactin and luteinizing hormone release in humans: Sex differences and the role of stress. *J Clin Endocrinol Metab.* 1981;52:924-8. PubMed PMID: 7228996.

Substance Identification

Substance Name

Brompheniramine

CAS Registry Number

86-22-6

Drug Class

Breast Feeding

Lactation

Antihistamines