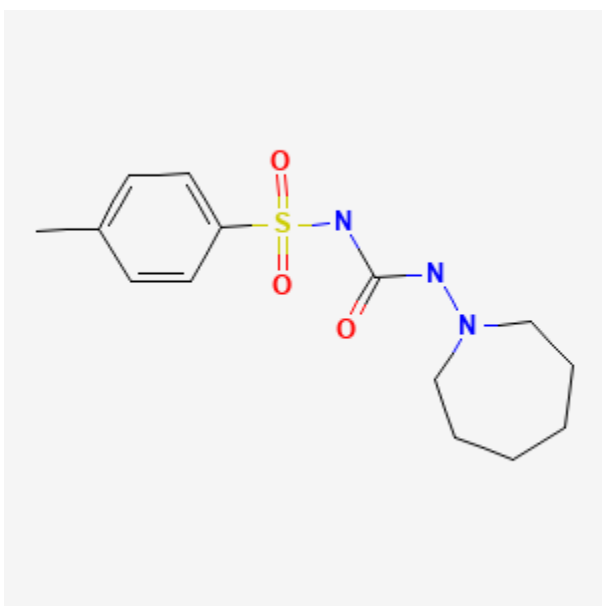




## Tolazamide

Revised: September 15, 2023.

CASRN: 1156-19-0



## Drug Levels and Effects

### Summary of Use during Lactation

Tolazamide is no longer marketed in the United States. Because no information is available on the use of tolazamide during breastfeeding, an alternate drug may be preferred, especially while nursing a newborn or preterm infant. Monitor breastfed infants for signs of hypoglycemia such as jitteriness, excessive sleepiness, poor feeding, seizures cyanosis, apnea, or hypothermia. If there is concern, monitoring of the breastfed infant's blood glucose is advisable during maternal therapy with hypoglycemic agents.[1,2]

### Drug Levels

*Maternal Levels.* Relevant published information was not found as of the revision date.

**Disclaimer:** Information presented in this database is not meant as a substitute for professional judgment. You should consult your healthcare provider for breastfeeding advice related to your particular situation. The U.S. government does not warrant or assume any liability or responsibility for the accuracy or completeness of the information on this Site.

**Attribution Statement:** LactMed is a registered trademark of the U.S. Department of Health and Human Services.

*Infant Levels.* Relevant published information was not found as of the revision date.

## Effects in Breastfed Infants

Relevant published information was not found as of the revision date.

## Effects on Lactation and Breastmilk

Relevant published information was not found as of the revision date.

## Alternate Drugs to Consider

Acarbose, Glipizide, Glyburide, Insulin, Metformin, Miglitol

## References

1. Everett JA. Use of oral antidiabetic agents during breastfeeding. *J Hum Lact* 1997;13:319-21. PubMed PMID: 9429368.
2. Berlin CM, Briggs GG. Drugs and chemicals in human milk. *Semin Fetal Neonatal Med* 2005;10:149-59. PubMed PMID: 15701580.

## Substance Identification

### Substance Name

Tolazamide

### CAS Registry Number

1156-19-0

### Drug Class

Breast Feeding

Lactation

Milk, Human

Hypoglycemic Agents

Sulfonylurea Compounds