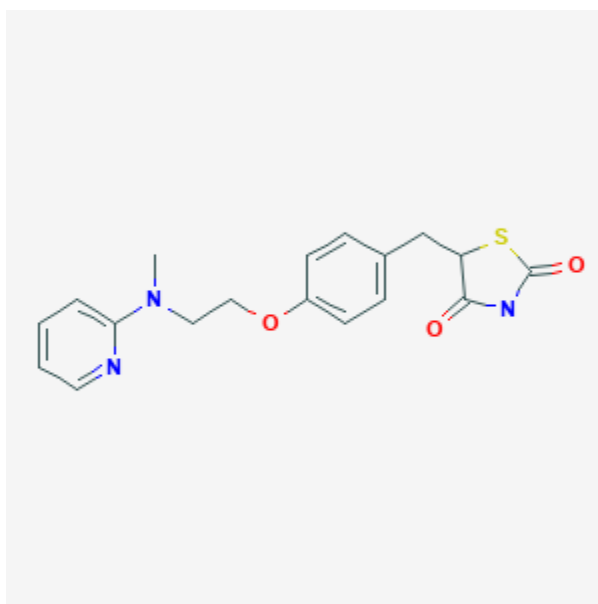




## Rosiglitazone

Revised: October 31, 2018.

CASRN: 122320-73-4



## Drug Levels and Effects

### Summary of Use during Lactation

No information is available on the clinical use of rosiglitazone during breastfeeding. Rosiglitazone is over 99% protein bound in plasma, so it is unlikely to pass into breastmilk in clinically important amounts. The manufacturer recommends avoiding breastfeeding during rosiglitazone use, so pioglitazone might be a better choice of the drugs in this class for nursing mothers.

### Drug Levels

*Maternal Levels.* Relevant published information was not found as of the revision date.

*Infant Levels.* Relevant published information was not found as of the revision date.

**Disclaimer:** Information presented in this database is not meant as a substitute for professional judgment. You should consult your healthcare provider for breastfeeding advice related to your particular situation. The U.S. government does not warrant or assume any liability or responsibility for the accuracy or completeness of the information on this Site.

**Attribution Statement:** LactMed is a registered trademark of the U.S. Department of Health and Human Services.

## Effects in Breastfed Infants

Relevant published information was not found as of the revision date.

## Effects on Lactation and Breastmilk

Relevant published information was not found as of the revision date.

## Alternate Drugs to Consider

Acarbose, Glipizide, Glyburide, Insulin, Metformin, Miglitol

## Substance Identification

### Substance Name

Rosiglitazone

### CAS Registry Number

122320-73-4

### Drug Class

Breast Feeding

Lactation

Hypoglycemic Agents

Thiazolidinediones