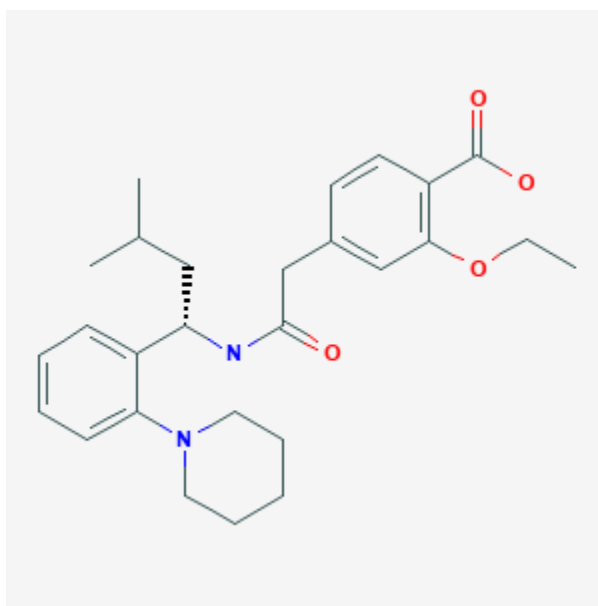




## Repaglinide

Revised: February 7, 2019.

CASRN: 135062-02-1



## Drug Levels and Effects

### Summary of Use during Lactation

No information is available on the use of repaglinide during breastfeeding. Repaglinide is a weak acid that is over 98% protein bound, so it is unlikely to pass into breastmilk in clinically important amounts. Monitor breastfed infants for signs of hypoglycemia such as jitteriness, excessive sleepiness, poor feeding, seizures cyanosis, apnea, or hypothermia. If there is concern, monitoring of the breastfed infant's blood glucose is advisable during maternal therapy with repaglinide.[1] However, an alternate drug may be preferred, especially while nursing a newborn or preterm infant.

**Disclaimer:** Information presented in this database is not meant as a substitute for professional judgment. You should consult your healthcare provider for breastfeeding advice related to your particular situation. The U.S. government does not warrant or assume any liability or responsibility for the accuracy or completeness of the information on this Site.

**Attribution Statement:** LactMed is a registered trademark of the U.S. Department of Health and Human Services.

## Drug Levels

*Maternal Levels.* Relevant published information was not found as of the revision date.

*Infant Levels.* Relevant published information was not found as of the revision date.

## Effects in Breastfed Infants

Relevant published information was not found as of the revision date.

## Effects on Lactation and Breastmilk

Relevant published information was not found as of the revision date.

## Alternate Drugs to Consider

Acarbose, Glipizide, Glyburide, Insulin, Metformin, Miglitol

## References

1. Berlin CM, Briggs GG. Drugs and chemicals in human milk. *Semin Fetal Neonatal Med.* 2005;10:149-59. PubMed PMID: 15701580.

## Substance Identification

### Substance Name

Repaglinide

### CAS Registry Number

135062-02-1

### Drug Class

Breast Feeding

Lactation

Hypoglycemic Agents