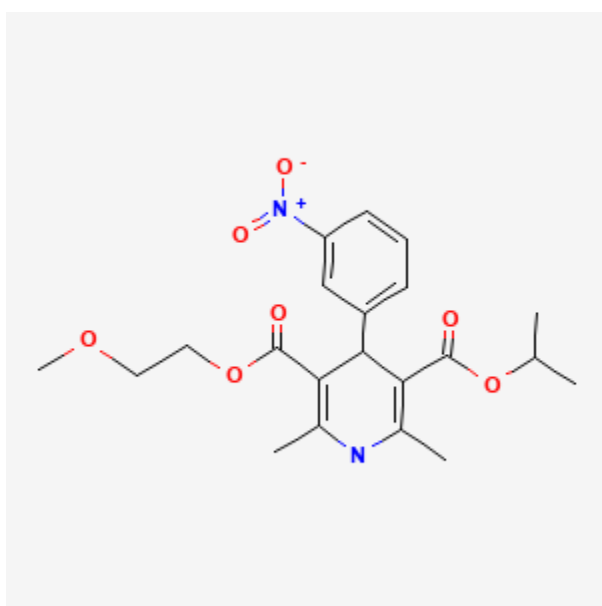




Nimodipine

Revised: January 18, 2021.

CASRN: 66085-59-4



Drug Levels and Effects

Summary of Use during Lactation

Based on limited data, amounts ingested by the infant are small and would not be expected to cause any adverse effects in breastfed infants.

Drug Levels

Maternal Levels. A woman who was 3 days postpartum received 60 mg of nimodipine orally every 4 hours. She had a peak milk nimodipine level of about 3.5 mcg/L at 1 hour after a dose at steady-state. Milk levels from 1 hour before a dose (i.e., 3 hours after the previous dose) to simultaneously with a dose were less than 1 mcg/L.[1]

Disclaimer: Information presented in this database is not meant as a substitute for professional judgment. You should consult your healthcare provider for breastfeeding advice related to your particular situation. The U.S. government does not warrant or assume any liability or responsibility for the accuracy or completeness of the information on this Site.

Attribution Statement: LactMed is a registered trademark of the U.S. Department of Health and Human Services.

Using the peak milk level data, the estimated maximum intake of an exclusively breastfed infant would be about 0.0009% of the maternal weight-adjusted dosage.

One woman who was 3 weeks postpartum was receiving nimodipine 2 mg per hour intravenously for 22 hours. The highest milk nimodipine concentration occurred 2 hours after completing the regimen and was 4.7 mcg/L. Four hours later the level had dropped to 0.63 mcg/L. It was estimated that a nursing infant would receive a maximum daily dosage of 0.092% of the mother's weight-adjusted dosage.[2]

Infant Levels. Relevant published information was not found as of the revision date.

Effects in Breastfed Infants

Relevant published information was not found as of the revision date.

Effects on Lactation and Breastmilk

Relevant published information was not found as of the revision date.

References

1. Tonks AM. Nimodipine levels in breast milk. *Aust N Z J Surg.* 1995;65:693–4. PubMed PMID: 7575306.
2. Carcas AJ, Abad-Santos F, de Rosendo JM, et al. Nimodipine transfer into human breast milk and cerebrospinal fluid. *Ann Pharmacother.* 1996;30:148–50. PubMed PMID: 8835048.

Substance Identification

Substance Name

Nimodipine

CAS Registry Number

66085-59-4

Drug Class

Breast Feeding

Lactation

Antihypertensive Agents

Calcium Channel Blockers

Vasodilator Agents