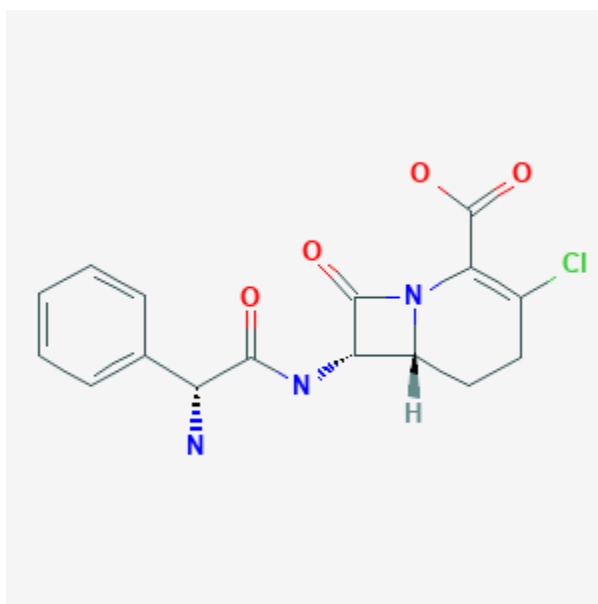




## Loracarbef

Revised: October 31, 2018.

CASRN: 76470-66-1



## Drug Levels and Effects

### Summary of Use during Lactation

Although no information is available on the use of loracarbef during breastfeeding, beta-lactam antibiotics are generally not expected to cause adverse effects in breastfed infants. Occasionally disruption of the infant's gastrointestinal flora, resulting in diarrhea or thrush have been reported with beta-lactams, but these effects have not been adequately evaluated. Loracarbef is acceptable in nursing mothers.

### Drug Levels

*Maternal Levels.* Relevant published information was not found as of the revision date.

*Infant Levels.* Relevant published information was not found as of the revision date.

**Disclaimer:** Information presented in this database is not meant as a substitute for professional judgment. You should consult your healthcare provider for breastfeeding advice related to your particular situation. The U.S. government does not warrant or assume any liability or responsibility for the accuracy or completeness of the information on this Site.

**Attribution Statement:** LactMed is a registered trademark of the U.S. Department of Health and Human Services.

## Effects in Breastfed Infants

Relevant published information was not found as of the revision date.

## Effects on Lactation and Breastmilk

Relevant published information was not found as of the revision date.

## Alternate Drugs to Consider

Cefprozil

## Substance Identification

### Substance Name

Loracarbef

### CAS Registry Number

76470-66-1

### Drug Class

Breast Feeding

Lactation

Anti-Infective Agents

Antibacterial Agents

Carbacephems