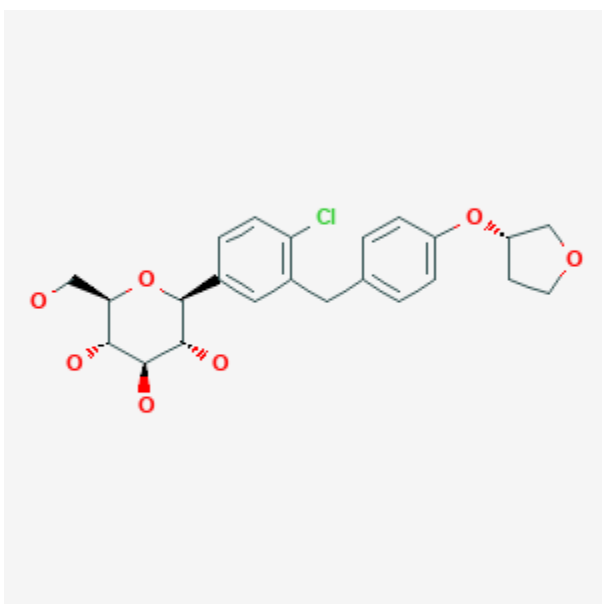




Empagliflozin

Revised: September 15, 2023.

CASRN: 864070-44-0



Drug Levels and Effects

Summary of Use during Lactation

No information is available on the clinical use of empagliflozin during breastfeeding. Empagliflozin is an uncharged molecule that is 86% protein bound in plasma, so it is unlikely to pass into breastmilk in clinically important amounts. The manufacturer does not recommend empagliflozin during breastfeeding because of a theoretical risk to the infant's developing kidney. An alternate drug may be preferred, especially while nursing a newborn or preterm infant.

Drug Levels

Maternal Levels. Relevant published information was not found as of the revision date.

Disclaimer: Information presented in this database is not meant as a substitute for professional judgment. You should consult your healthcare provider for breastfeeding advice related to your particular situation. The U.S. government does not warrant or assume any liability or responsibility for the accuracy or completeness of the information on this Site.

Attribution Statement: LactMed is a registered trademark of the U.S. Department of Health and Human Services.

Infant Levels. Relevant published information was not found as of the revision date.

Effects in Breastfed Infants

Relevant published information was not found as of the revision date.

Effects on Lactation and Breastmilk

Relevant published information was not found as of the revision date.

Alternate Drugs to Consider

Acarbose, Glipizide, Glyburide, Insulin, Metformin, Miglitol

Substance Identification

Substance Name

Empagliflozin

CAS Registry Number

864070-44-0

Drug Class

Breast Feeding

Lactation

Milk, Human

Hypoglycemic Agents

Sodium-Glucose Cotransporter 2 Inhibitors

SGLT2 Inhibitors