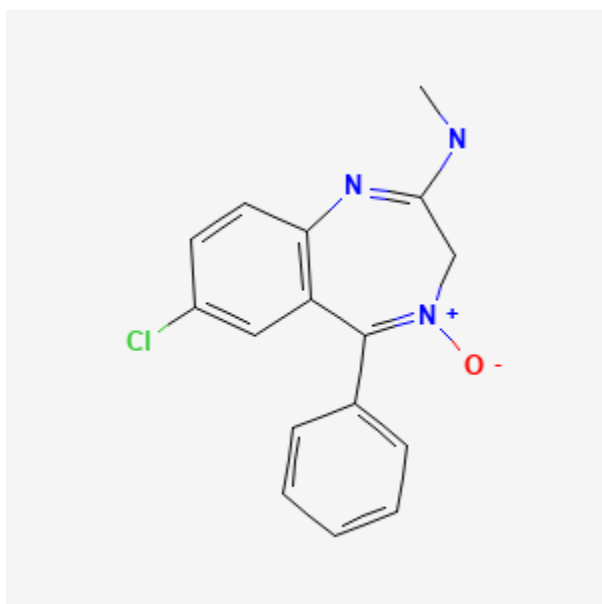




## Chlordiazepoxide

Revised: January 15, 2024.

CASRN: 58-25-3



## Drug Levels and Effects

### Summary of Use during Lactation

No information is available on the use of chlordiazepoxide during breastfeeding. Because the drug and metabolites could accumulate in the breastfed infant, an alternate drug may be preferred, especially while nursing a newborn or preterm infant. If chlordiazepoxide is used, monitor the infant for sedation, poor feeding and poor weight gain.

**Disclaimer:** Information presented in this database is not meant as a substitute for professional judgment. You should consult your healthcare provider for breastfeeding advice related to your particular situation. The U.S. government does not warrant or assume any liability or responsibility for the accuracy or completeness of the information on this Site.

**Attribution Statement:** LactMed is a registered trademark of the U.S. Department of Health and Human Services.

## Drug Levels

Chlordiazepoxide is metabolized to active compounds including demoxepam, desmethylchlordiazepoxide, desmethyldiazepam, and oxazepam. Chlordiazepoxide has a long half-life of 5 to 30 hours, and the half-lives of its metabolites range from 14 to 100 hours.

*Maternal Levels.* Relevant published information was not found as of the revision date.

*Infant Levels.* Relevant published information was not found as of the revision date.

## Effects in Breastfed Infants

Relevant published information was not found as of the revision date.

## Effects on Lactation and Breastmilk

Relevant published information was not found as of the revision date.

## Alternate Drugs to Consider

Lorazepam, Oxazepam, Temazepam

## Substance Identification

### Substance Name

Chlordiazepoxide

### CAS Registry Number

58-25-3

### Drug Class

Breast Feeding

Lactation

Milk, Human

Hypnotics and Sedatives

Anti-Anxiety Agents

Benzodiazepines