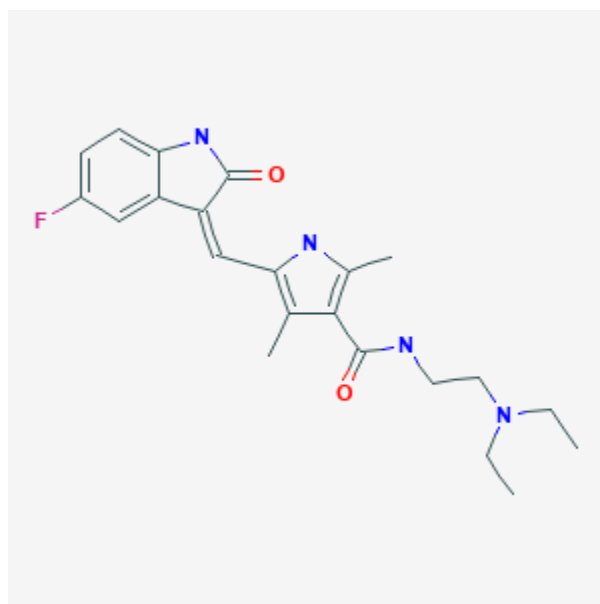




## Sunitinib

Revised: December 3, 2018.

CASRN: 557795-19-4



## Drug Levels and Effects

### Summary of Use during Lactation

No information is available on the clinical use of sunitinib during breastfeeding. Because sunitinib and its metabolite are over 90% bound to plasma proteins, the amount in milk is likely to be low. However, one of its metabolites has a half-life of up to 110 hours, and might accumulate in the infant. The manufacturer recommends that breastfeeding be discontinued during sunitinib therapy and for at least 4 weeks after the last dose.

### Drug Levels

*Maternal Levels.* Relevant published information was not found as of the revision date.

**Disclaimer:** Information presented in this database is not meant as a substitute for professional judgment. You should consult your healthcare provider for breastfeeding advice related to your particular situation. The U.S. government does not warrant or assume any liability or responsibility for the accuracy or completeness of the information on this Site.

**Attribution Statement:** LactMed is a registered trademark of the U.S. Department of Health and Human Services.

*Infant Levels.* Relevant published information was not found as of the revision date.

### **Effects in Breastfed Infants**

Relevant published information was not found as of the revision date.

### **Effects on Lactation and Breastmilk**

Relevant published information was not found as of the revision date.

## **Substance Identification**

### **Substance Name**

Sunitinib

### **CAS Registry Number**

557795-19-4

### **Drug Class**

Breast Feeding

Lactation

Antineoplastic Agents

Enzyme Inhibitors

Protein Kinase Inhibitors

Signal Transduction Inhibitors

Tyrosine Kinase Inhibitors