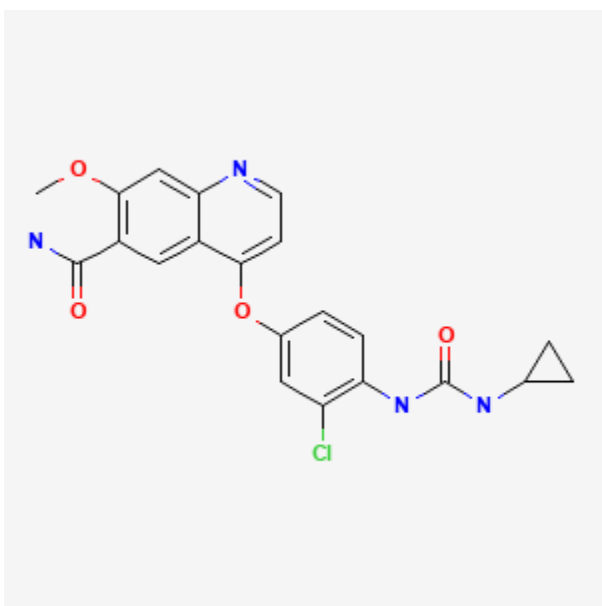




## Lenvatinib

Revised: November 30, 2022.

CASRN: 417716-92-8



## Drug Levels and Effects

### Summary of Use during Lactation

No information is available on the clinical use of lenvatinib during breastfeeding. Because lenvatinib is more than 98% bound to plasma proteins, the amount in milk is likely to be low. However, its half-life is about 28 hours and it might accumulate in the infant. The manufacturer recommends that breastfeeding be discontinued during lenvatinib therapy and for at least 1 week after the last dose.

### Drug Levels

*Maternal Levels.* Relevant published information was not found as of the revision date.

*Infant Levels.* Relevant published information was not found as of the revision date.

**Disclaimer:** Information presented in this database is not meant as a substitute for professional judgment. You should consult your healthcare provider for breastfeeding advice related to your particular situation. The U.S. government does not warrant or assume any liability or responsibility for the accuracy or completeness of the information on this Site.

**Attribution Statement:** LactMed is a registered trademark of the U.S. Department of Health and Human Services.

## Effects in Breastfed Infants

Relevant published information was not found as of the revision date.

## Effects on Lactation and Breastmilk

Relevant published information was not found as of the revision date.

## Substance Identification

### Substance Name

Lenvatinib

### CAS Registry Number

417716-92-8

### Drug Class

Breast Feeding

Lactation

Milk, Human

Antineoplastic Agents

Enzyme Inhibitors

Protein Kinase Inhibitors

Signal Transduction Inhibitors

Tyrosine Kinase Inhibitors