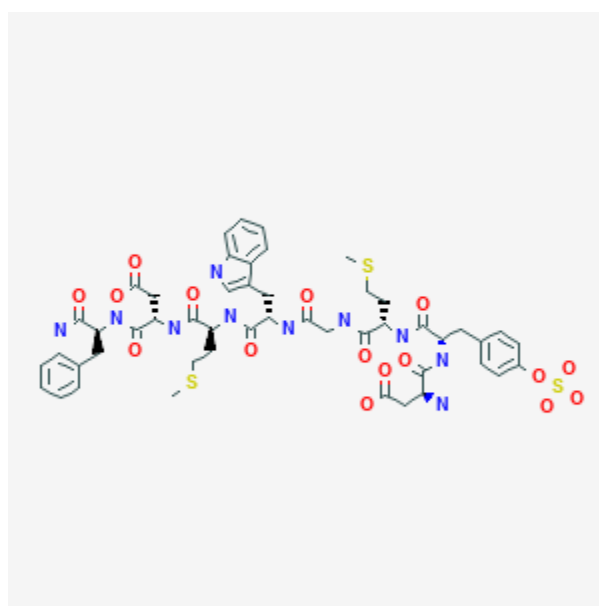




Sincalide

Revised: December 3, 2018.

CASRN: 25126-32-3



Drug Levels and Effects

Summary of Use during Lactation

Sincalide is a synthetic octapeptide analogue of cholecystokinin. Because sincalide has a molecular weight of 1143, the amount in milk is likely to be very low and oral absorption by the infant is unlikely because it is probably destroyed in the infant's gastrointestinal tract. The serum half-life of sincalide is less than 2 minutes, indicating that withholding breastfeeding for 10 minutes after a dose should ensure that the infant is not exposed to the drug.

Drug Levels

Maternal Levels. Relevant published information was not found as of the revision date.

Disclaimer: Information presented in this database is not meant as a substitute for professional judgment. You should consult your healthcare provider for breastfeeding advice related to your particular situation. The U.S. government does not warrant or assume any liability or responsibility for the accuracy or completeness of the information on this Site.

Attribution Statement: LactMed is a registered trademark of the U.S. Department of Health and Human Services.

Infant Levels. Relevant published information was not found as of the revision date.

Effects in Breastfed Infants

Relevant published information was not found as of the revision date.

Effects on Lactation and Breastmilk

Relevant published information was not found as of the revision date.

Substance Identification

Substance Name

Sincalide

CAS Registry Number

25126-32-3

Drug Class

Breast Feeding

Lactation

Gastrointestinal Hormones

Cholecystokinin

Diagnostic Agents