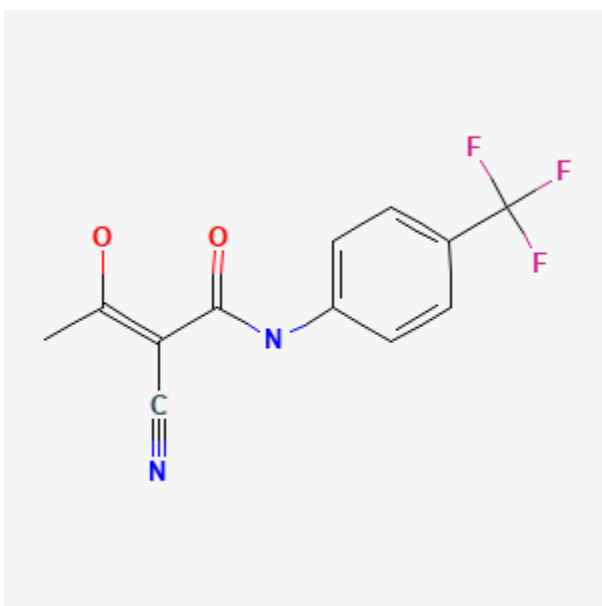




Teriflunomide

Revised: May 17, 2021.

CASRN: 163451-81-8



Drug Levels and Effects

Summary of Use during Lactation

Because there is no published experience with teriflunomide during breastfeeding, it should be avoided during breastfeeding, especially while nursing a newborn or preterm infant.[1-3]

Drug Levels

Maternal Levels. Relevant published information was not found as of the revision date.

Infant Levels. Relevant published information was not found as of the revision date.

Disclaimer: Information presented in this database is not meant as a substitute for professional judgment. You should consult your healthcare provider for breastfeeding advice related to your particular situation. The U.S. government does not warrant or assume any liability or responsibility for the accuracy or completeness of the information on this Site.

Attribution Statement: LactMed is a registered trademark of the U.S. Department of Health and Human Services.

Effects in Breastfed Infants

Relevant published information was not found as of the revision date.

Effects on Lactation and Breastmilk

Relevant published information was not found as of the revision date.

Alternate Drugs to Consider

(Multiple Sclerosis) [Glatiramer](#), [Immune Globulin](#), [Interferon Beta](#), [Methylprednisolone](#)

References

1. Bove R, Alwan S, Friedman JM, et al. Management of multiple sclerosis during pregnancy and the reproductive years: A systematic review. *Obstet Gynecol.* 2014;124:1157–68. PubMed PMID: 25415167.
2. Almas S, Vance J, Baker T, et al. Management of multiple sclerosis in the breastfeeding mother. *Mult Scler Int.* 2016;2016:6527458. PubMed PMID: 26966579.
3. Dobson R, Dassan P, Roberts M, et al. UK consensus on pregnancy in multiple sclerosis: 'Association of British Neurologists' guidelines. *Pract Neurol.* 2019;19:106–14. PubMed PMID: 30612100.

Substance Identification

Substance Name

Teriflunomide

CAS Registry Number

163451-81-8

Drug Class

Breast Feeding

Lactation

Immunosuppressive Agents