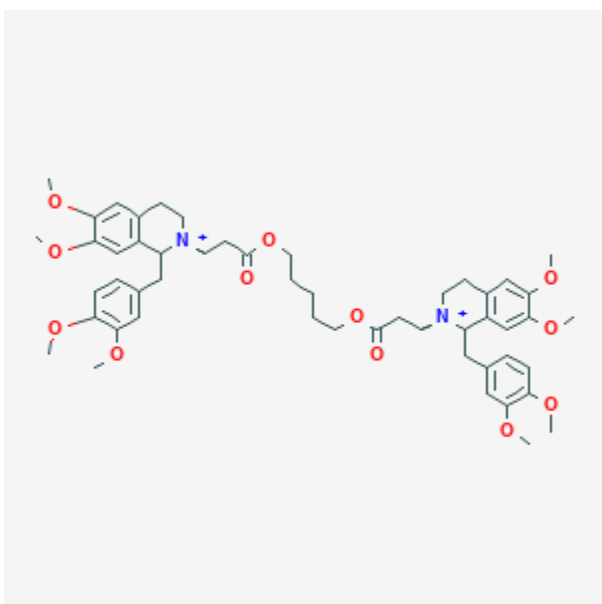




Atracurium

Revised: November 30, 2022.

CASRN: 64228-79-1



Drug Levels and Effects

Summary of Use during Lactation

No information is available on the use of atracurium during breastfeeding. Because it is short acting, highly polar and poorly absorbed orally, it is not likely to reach the breastmilk in high concentration or to reach the bloodstream of the infant.[1,2] When a combination of anesthetic agents is used for a procedure, follow the recommendations for the most problematic medication used during the procedure. Consider using an atracurium product that has no benzyl alcohol preservative.

Drug Levels

Maternal Levels. Relevant published information was not found as of the revision date.

Disclaimer: Information presented in this database is not meant as a substitute for professional judgment. You should consult your healthcare provider for breastfeeding advice related to your particular situation. The U.S. government does not warrant or assume any liability or responsibility for the accuracy or completeness of the information on this Site.

Attribution Statement: LactMed is a registered trademark of the U.S. Department of Health and Human Services.

Infant Levels. Relevant published information was not found as of the revision date.

Effects in Breastfed Infants

Relevant published information was not found as of the revision date.

Effects on Lactation and Breastmilk

Relevant published information was not found as of the revision date.

Alternate Drugs to Consider

Cisatracurium, Rocuronium

References

1. Spigset O. Anaesthetic agents and excretion in breast milk. *Acta Anaesthesiol Scand.* 1994;38:94–103. PubMed PMID: 8171959.
2. Dalal PG, Bosak J, Berlin C. Safety of the breast-feeding infant after maternal anesthesia. *Paediatr Anaesth.* 2014;24:359–71. PubMed PMID: 24372776.

Substance Identification

Substance Name

Atracurium

CAS Registry Number

64228-81-5; 64228-79-1

Drug Class

Breast Feeding

Lactation

Milk, Human

Muscle Relaxants

Neuromuscular Nondepolarizing Agents