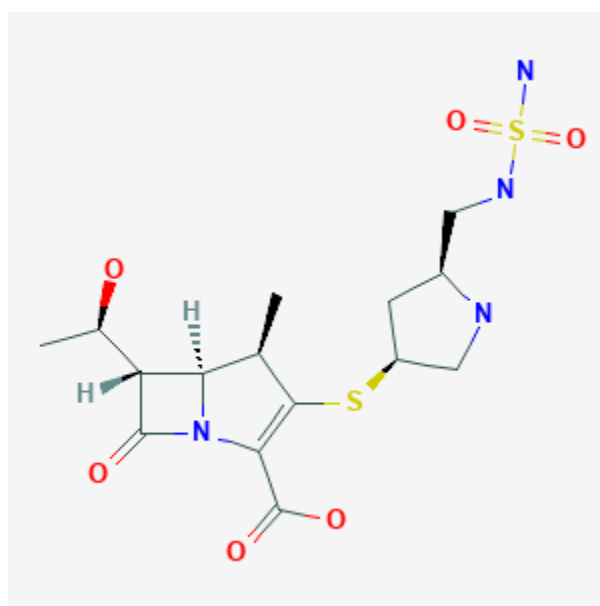




Doripenem

Revised: December 3, 2018.

CASRN: 148016-81-3



Drug Levels and Effects

Summary of Use during Lactation

No information is available on the clinical use of doripenem during breastfeeding. Its excretion into breastmilk is likely similar to that of imipenem and meropenem, which produce low levels in milk that are not expected to cause adverse effects in breastfed infants. Occasionally disruption of the infant's gastrointestinal flora, resulting in diarrhea or thrush has been reported with beta-lactams, but these effects have not been adequately evaluated. Doripenem is acceptable in nursing mothers.

Drug Levels

Maternal Levels. Relevant published information was not found as of the revision date.

Disclaimer: Information presented in this database is not meant as a substitute for professional judgment. You should consult your healthcare provider for breastfeeding advice related to your particular situation. The U.S. government does not warrant or assume any liability or responsibility for the accuracy or completeness of the information on this Site.

Attribution Statement: LactMed is a registered trademark of the U.S. Department of Health and Human Services.

Infant Levels. Relevant published information was not found as of the revision date.

Effects in Breastfed Infants

Relevant published information was not found as of the revision date.

Effects on Lactation and Breastmilk

Relevant published information was not found as of the revision date.

Alternate Drugs to Consider

Imipenem and Cilastatin, Meropenem

Substance Identification

Substance Name

Doripenem

CAS Registry Number

148016-81-3

Drug Class

Breast Feeding

Lactation

Anti-Infective Agents

Antibacterial Agents

Carbapenems